

Sales Ratio Report

As Of: 3/18/2026 Tax Year: 2026 Values - Final Sale Price - Actual

APPRAISAL

| Neighborhood: 1002 | | | | |
|---------------------------|------------------|--------------|---------------------|--------------|
| | Assessment Ratio | SalesPrice | Adjusted Sale Price | Value |
| Low Value | 95.95% | \$494,000.00 | \$494,000.00 | \$510,654.00 |
| High Value | 104.95% | \$699,900.00 | \$699,900.00 | \$687,286.00 |
| Median | 101.07% | \$580,000.00 | \$580,000.00 | \$575,726.00 |
| Mean | 101.07% | \$589,414.29 | \$589,414.29 | \$594,363.57 |
| Weighted Mean | 100.84% | | | |
| Standard Deviation | 3.23 | 76,871.76 | 76,871.76 | 67,396.95 |
| Coefficient of Dispersion | 2.49 | | | |
| Coefficient of Variation | 3.20 | | | |

| Neighborhood: 1004 | | | | |
|---------------------------|------------------|--------------|---------------------|--------------|
| | Assessment Ratio | SalesPrice | Adjusted Sale Price | Value |
| Low Value | 86.98% | \$375,000.00 | \$375,000.00 | \$353,282.00 |
| High Value | 115.24% | \$540,000.00 | \$540,000.00 | \$505,243.00 |
| Median | 100.78% | \$416,250.00 | \$416,250.00 | \$440,076.50 |
| Mean | 101.32% | \$428,938.89 | \$428,938.89 | \$433,265.89 |
| Weighted Mean | 101.01% | | | |
| Standard Deviation | 7.16 | 44,153.64 | 44,153.64 | 39,684.60 |
| Coefficient of Dispersion | 5.78 | | | |
| Coefficient of Variation | 7.07 | | | |

| Neighborhood: 1006 | | | | |
|--------------------|------------------|------------|---------------------|-------|
| | Assessment Ratio | SalesPrice | Adjusted Sale Price | Value |

Sales Ratio Report

As Of: 3/18/2026 Tax Year: 2026 Values - Final Sale Price - Actual

APPRAISAL

| Neighborhood: 1006 | | | | | |
|---------------------------|------------------|--------------|---------------------|--------------|--|
| | Assessment Ratio | SalesPrice | Adjusted Sale Price | Value | |
| Low Value | 91.57% | \$275,000.00 | \$275,000.00 | \$278,867.00 | |
| High Value | 106.78% | \$415,000.00 | \$415,000.00 | \$434,130.00 | |
| Median | 102.51% | \$333,750.00 | \$333,750.00 | \$329,570.00 | |
| Mean | 101.10% | \$336,414.29 | \$336,414.29 | \$340,393.43 | |
| Weighted Mean | 101.18% | | | | |
| Standard Deviation | 4.57 | 36,215.42 | 36,215.42 | 43,028.53 | |
| Coefficient of Dispersion | 3.51 | | | | |
| Coefficient of Variation | 4.53 | | | | |

| Neighborhood: 1009 | | | | | |
|---------------------------|------------------|--------------|---------------------|--------------|--|
| | Assessment Ratio | SalesPrice | Adjusted Sale Price | Value | |
| Low Value | 85.37% | \$200,000.00 | \$200,000.00 | \$216,010.00 | |
| High Value | 116.00% | \$492,617.00 | \$492,617.00 | \$479,853.00 | |
| Median | 101.52% | \$303,733.00 | \$303,733.00 | \$306,703.50 | |
| Mean | 100.81% | \$313,703.41 | \$313,703.41 | \$316,081.32 | |
| Weighted Mean | 100.76% | | | | |
| Standard Deviation | 6.18 | 54,883.67 | 54,883.67 | 57,485.68 | |
| Coefficient of Dispersion | 4.80 | | | | |
| Coefficient of Variation | 6.13 | | | | |

| Neighborhood: 1014 | | | | | |
|--------------------|------------------|------------|---------------------|-------|--|
| | Assessment Ratio | SalesPrice | Adjusted Sale Price | Value | |

Sales Ratio Report

As Of: 3/18/2026 Tax Year: 2026 Values - Final Sale Price - Actual

APPRAISAL

| Neighborhood: 1014 | | | | | |
|---------------------------|------------------|--------------|---------------------|--------------|--|
| | Assessment Ratio | SalesPrice | Adjusted Sale Price | Value | |
| Low Value | 91.05% | \$545,000.00 | \$545,000.00 | \$537,337.00 | |
| High Value | 107.73% | \$775,000.00 | \$775,000.00 | \$816,927.00 | |
| Median | 101.52% | \$636,750.00 | \$636,750.00 | \$631,191.50 | |
| Mean | 100.43% | \$640,233.33 | \$640,233.33 | \$643,340.72 | |
| Weighted Mean | 100.49% | | | | |
| Standard Deviation | 4.58 | 63,215.18 | 63,215.18 | 74,187.14 | |
| Coefficient of Dispersion | 3.57 | | | | |
| Coefficient of Variation | 4.56 | | | | |

| Neighborhood: 1016 | | | | | |
|---------------------------|------------------|--------------|---------------------|--------------|--|
| | Assessment Ratio | SalesPrice | Adjusted Sale Price | Value | |
| Low Value | 94.08% | \$355,500.00 | \$355,500.00 | \$364,551.00 | |
| High Value | 114.46% | \$680,000.00 | \$680,000.00 | \$701,813.00 | |
| Median | 101.00% | \$465,000.00 | \$465,000.00 | \$457,869.00 | |
| Mean | 102.21% | \$469,853.13 | \$469,853.13 | \$480,022.19 | |
| Weighted Mean | 102.16% | | | | |
| Standard Deviation | 5.47 | 76,082.10 | 76,082.10 | 81,424.35 | |
| Coefficient of Dispersion | 4.17 | | | | |
| Coefficient of Variation | 5.35 | | | | |

| Neighborhood: 1017 | | | | | |
|--------------------|------------------|------------|---------------------|-------|--|
| | Assessment Ratio | SalesPrice | Adjusted Sale Price | Value | |

Sales Ratio Report

As Of: 3/18/2026 Tax Year: 2026 Values - Final Sale Price - Actual

APPRAISAL

Neighborhood: 1017

| | Assessment Ratio | SalesPrice | Adjusted Sale Price | Value |
|---------------------------|------------------|--------------|---------------------|--------------|
| Low Value | 90.68% | \$301,000.00 | \$301,000.00 | \$295,303.00 |
| High Value | 114.40% | \$480,000.00 | \$480,000.00 | \$517,983.00 |
| Median | 101.15% | \$395,000.00 | \$395,000.00 | \$408,390.00 |
| Mean | 102.09% | \$389,524.26 | \$389,524.26 | \$397,172.31 |
| Weighted Mean | 101.96% | | | |
| Standard Deviation | 6.36 | 51,226.64 | 51,226.64 | 54,037.55 |
| Coefficient of Dispersion | 5.01 | | | |
| Coefficient of Variation | 6.23 | | | |

Neighborhood: 1018

| | Assessment Ratio | SalesPrice | Adjusted Sale Price | Value |
|---------------------------|------------------|--------------|---------------------|--------------|
| Low Value | 87.20% | \$300,000.00 | \$300,000.00 | \$269,888.00 |
| High Value | 104.75% | \$375,000.00 | \$375,000.00 | \$374,098.00 |
| Median | 101.22% | \$330,000.00 | \$330,000.00 | \$327,000.00 |
| Mean | 97.46% | \$334,520.43 | \$334,520.43 | \$326,303.57 |
| Weighted Mean | 97.54% | | | |
| Standard Deviation | 7.20 | 28,515.94 | 28,515.94 | 39,326.70 |
| Coefficient of Dispersion | 5.68 | | | |
| Coefficient of Variation | 7.39 | | | |

Neighborhood: 1020

| | Assessment Ratio | SalesPrice | Adjusted Sale Price | Value |
|--|------------------|------------|---------------------|-------|
|--|------------------|------------|---------------------|-------|

Sales Ratio Report

As Of: 3/18/2026 Tax Year: 2026 Values - Final Sale Price - Actual

APPRAISAL

| Neighborhood: 1020 | | | | | |
|---------------------------|------------------|--------------|---------------------|--------------|--|
| | Assessment Ratio | SalesPrice | Adjusted Sale Price | Value | |
| Low Value | 85.38% | \$210,000.00 | \$210,000.00 | \$226,448.00 | |
| High Value | 115.37% | \$369,990.00 | \$369,990.00 | \$373,976.00 | |
| Median | 99.77% | \$320,000.00 | \$320,000.00 | \$314,967.00 | |
| Mean | 99.86% | \$311,819.07 | \$311,819.07 | \$310,391.58 | |
| Weighted Mean | 99.54% | | | | |
| Standard Deviation | 7.37 | 33,380.94 | 33,380.94 | 32,425.17 | |
| Coefficient of Dispersion | 5.91 | | | | |
| Coefficient of Variation | 7.38 | | | | |

| Neighborhood: 1022 | | | | | |
|---------------------------|------------------|--------------|---------------------|--------------|--|
| | Assessment Ratio | SalesPrice | Adjusted Sale Price | Value | |
| Low Value | 89.82% | \$308,000.00 | \$308,000.00 | \$299,834.00 | |
| High Value | 111.94% | \$442,540.00 | \$442,540.00 | \$436,392.00 | |
| Median | 101.49% | \$363,120.00 | \$363,120.00 | \$371,754.00 | |
| Mean | 101.18% | \$365,294.86 | \$365,204.77 | \$369,883.04 | |
| Weighted Mean | 101.26% | | | | |
| Standard Deviation | 4.47 | 31,884.63 | 31,989.04 | 38,667.38 | |
| Coefficient of Dispersion | 3.51 | | | | |
| Coefficient of Variation | 4.42 | | | | |

| Neighborhood: 1029 | | | | | |
|--------------------|------------------|------------|---------------------|-------|--|
| | Assessment Ratio | SalesPrice | Adjusted Sale Price | Value | |

Sales Ratio Report

As Of: 3/18/2026 Tax Year: 2026 Values - Final Sale Price - Actual

APPRAISAL

Neighborhood: 1029

| | Assessment Ratio | SalesPrice | Adjusted Sale Price | Value |
|---------------------------|------------------|--------------|---------------------|--------------|
| Low Value | 91.13% | \$240,000.00 | \$240,000.00 | \$231,522.00 |
| High Value | 113.09% | \$562,255.00 | \$562,255.00 | \$599,555.00 |
| Median | 101.66% | \$309,000.00 | \$309,000.00 | \$316,574.00 |
| Mean | 102.01% | \$352,904.27 | \$352,904.27 | \$360,970.14 |
| Weighted Mean | 102.29% | | | |
| Standard Deviation | 5.80 | 102,333.99 | 102,333.99 | 110,332.81 |
| Coefficient of Dispersion | 4.61 | | | |
| Coefficient of Variation | 5.69 | | | |

Neighborhood: 1030

| | Assessment Ratio | SalesPrice | Adjusted Sale Price | Value |
|---------------------------|------------------|--------------|---------------------|--------------|
| Low Value | 98.21% | \$266,000.00 | \$266,000.00 | \$267,561.00 |
| High Value | 100.59% | \$283,000.00 | \$283,000.00 | \$277,935.00 |
| Median | 99.40% | \$274,500.00 | \$274,500.00 | \$272,748.00 |
| Mean | 99.40% | \$274,500.00 | \$274,500.00 | \$272,748.00 |
| Weighted Mean | 99.36% | | | |
| Standard Deviation | 1.68 | 12,020.82 | 12,020.82 | 7,335.53 |
| Coefficient of Dispersion | 1.20 | | | |
| Coefficient of Variation | 1.69 | | | |

Neighborhood: 1040

| | Assessment Ratio | SalesPrice | Adjusted Sale Price | Value |
|--|------------------|------------|---------------------|-------|
|--|------------------|------------|---------------------|-------|

Sales Ratio Report

As Of: 3/18/2026 Tax Year: 2026 Values - Final Sale Price - Actual

APPRAISAL

| Neighborhood: 1040 | | | | | |
|---------------------------|------------------|--------------|---------------------|--------------|--|
| | Assessment Ratio | SalesPrice | Adjusted Sale Price | Value | |
| Low Value | 95.73% | \$180,000.00 | \$180,000.00 | \$183,062.00 | |
| High Value | 108.71% | \$312,500.00 | \$312,500.00 | \$299,171.00 | |
| Median | 101.62% | \$207,500.00 | \$207,500.00 | \$217,878.00 | |
| Mean | 101.92% | \$226,875.00 | \$226,875.00 | \$229,497.25 | |
| Weighted Mean | 101.16% | | | | |
| Standard Deviation | 5.31 | 58,856.29 | 58,856.29 | 49,264.88 | |
| Coefficient of Dispersion | 3.23 | | | | |
| Coefficient of Variation | 5.21 | | | | |

| Neighborhood: 1100 | | | | | |
|---------------------------|------------------|--------------|---------------------|--------------|--|
| | Assessment Ratio | SalesPrice | Adjusted Sale Price | Value | |
| Low Value | 93.52% | \$175,000.00 | \$175,000.00 | \$183,365.00 | |
| High Value | 104.78% | \$235,000.00 | \$235,000.00 | \$219,782.00 | |
| Median | 99.15% | \$205,000.00 | \$205,000.00 | \$201,573.50 | |
| Mean | 99.15% | \$205,000.00 | \$205,000.00 | \$201,573.50 | |
| Weighted Mean | 98.33% | | | | |
| Standard Deviation | 7.96 | 42,426.41 | 42,426.41 | 25,750.71 | |
| Coefficient of Dispersion | 5.68 | | | | |
| Coefficient of Variation | 8.03 | | | | |

| Neighborhood: 1103 | | | | | |
|--------------------|------------------|------------|---------------------|-------|--|
| | Assessment Ratio | SalesPrice | Adjusted Sale Price | Value | |

Sales Ratio Report

As Of: 3/18/2026 Tax Year: 2026 Values - Final Sale Price - Actual

APPRAISAL

Neighborhood: 1103

| | Assessment Ratio | SalesPrice | Adjusted Sale Price | Value |
|---------------------------|------------------|--------------|---------------------|--------------|
| Low Value | 96.31% | \$210,000.00 | \$210,000.00 | \$211,660.00 |
| High Value | 110.23% | \$325,000.00 | \$325,000.00 | \$343,442.00 |
| Median | 101.25% | \$305,000.00 | \$305,000.00 | \$311,052.00 |
| Mean | 103.08% | \$289,125.00 | \$289,125.00 | \$298,369.75 |
| Weighted Mean | 103.20% | | | |
| Standard Deviation | 4.65 | 39,962.26 | 39,962.26 | 45,562.42 |
| Coefficient of Dispersion | 3.45 | | | |
| Coefficient of Variation | 4.51 | | | |

Neighborhood: 1140

| | Assessment Ratio | SalesPrice | Adjusted Sale Price | Value |
|---------------------------|------------------|--------------|---------------------|--------------|
| Low Value | 95.25% | \$285,000.00 | \$285,000.00 | \$271,452.00 |
| High Value | 106.66% | \$324,700.00 | \$324,700.00 | \$346,334.00 |
| Median | 100.95% | \$304,850.00 | \$304,850.00 | \$308,893.00 |
| Mean | 100.95% | \$304,850.00 | \$304,850.00 | \$308,893.00 |
| Weighted Mean | 101.33% | | | |
| Standard Deviation | 8.07 | 28,072.14 | 28,072.14 | 52,949.57 |
| Coefficient of Dispersion | 5.65 | | | |
| Coefficient of Variation | 8.00 | | | |

Neighborhood: 1180

| | Assessment Ratio | SalesPrice | Adjusted Sale Price | Value |
|--|------------------|------------|---------------------|-------|
|--|------------------|------------|---------------------|-------|

Sales Ratio Report

As Of: 3/18/2026 Tax Year: 2026 Values - Final Sale Price - Actual

APPRAISAL

| Neighborhood: 1180 | | | | | |
|---------------------------|------------------|--------------|---------------------|--------------|--|
| | Assessment Ratio | SalesPrice | Adjusted Sale Price | Value | |
| Low Value | 94.69% | \$245,000.00 | \$245,000.00 | \$231,986.00 | |
| High Value | 110.54% | \$245,000.00 | \$245,000.00 | \$270,811.00 | |
| Median | 102.61% | \$245,000.00 | \$245,000.00 | \$251,398.50 | |
| Mean | 102.61% | \$245,000.00 | \$245,000.00 | \$251,398.50 | |
| Weighted Mean | 102.61% | | | | |
| Standard Deviation | 11.21 | 0.00 | 0.00 | 27,453.42 | |
| Coefficient of Dispersion | 7.72 | | | | |
| Coefficient of Variation | 10.92 | | | | |

| Neighborhood: 1222 | | | | | |
|---------------------------|------------------|--------------|---------------------|--------------|--|
| | Assessment Ratio | SalesPrice | Adjusted Sale Price | Value | |
| Low Value | 89.67% | \$170,000.00 | \$170,000.00 | \$159,998.00 | |
| High Value | 94.12% | \$193,450.00 | \$193,450.00 | \$173,474.00 | |
| Median | 91.90% | \$181,725.00 | \$181,725.00 | \$166,736.00 | |
| Mean | 91.90% | \$181,725.00 | \$181,725.00 | \$166,736.00 | |
| Weighted Mean | 91.75% | | | | |
| Standard Deviation | 3.14 | 16,581.65 | 16,581.65 | 9,528.97 | |
| Coefficient of Dispersion | 2.42 | | | | |
| Coefficient of Variation | 3.42 | | | | |

| Neighborhood: 1223 | | | | | |
|--------------------|------------------|------------|---------------------|-------|--|
| | Assessment Ratio | SalesPrice | Adjusted Sale Price | Value | |

Sales Ratio Report

As Of: 3/18/2026 Tax Year: 2026 Values - Final Sale Price - Actual

APPRAISAL

Neighborhood: 1223

| | Assessment Ratio | SalesPrice | Adjusted Sale Price | Value |
|---------------------------|------------------|--------------|---------------------|--------------|
| Low Value | 87.52% | \$267,000.00 | \$267,000.00 | \$249,441.00 |
| High Value | 108.41% | \$310,000.00 | \$310,000.00 | \$330,420.00 |
| Median | 101.63% | \$295,000.00 | \$295,000.00 | \$292,148.50 |
| Mean | 99.80% | \$291,750.00 | \$291,750.00 | \$291,039.50 |
| Weighted Mean | 99.76% | | | |
| Standard Deviation | 9.67 | 19,720.97 | 19,720.97 | 33,157.07 |
| Coefficient of Dispersion | 7.58 | | | |
| Coefficient of Variation | 9.69 | | | |

Neighborhood: 1225

| | Assessment Ratio | SalesPrice | Adjusted Sale Price | Value |
|---------------------------|------------------|--------------|---------------------|--------------|
| Low Value | 93.96% | \$210,000.00 | \$210,000.00 | \$214,834.00 |
| High Value | 114.82% | \$265,000.00 | \$265,000.00 | \$253,467.00 |
| Median | 99.10% | \$229,500.00 | \$229,500.00 | \$239,946.00 |
| Mean | 101.39% | \$234,315.00 | \$234,315.00 | \$236,645.17 |
| Weighted Mean | 100.99% | | | |
| Standard Deviation | 8.09 | 20,196.51 | 20,196.51 | 15,037.63 |
| Coefficient of Dispersion | 6.27 | | | |
| Coefficient of Variation | 7.98 | | | |

Neighborhood: 1226

| | Assessment Ratio | SalesPrice | Adjusted Sale Price | Value |
|--|------------------|------------|---------------------|-------|
|--|------------------|------------|---------------------|-------|

Sales Ratio Report

As Of: 3/18/2026 Tax Year: 2026 Values - Final Sale Price - Actual

APPRAISAL

| Neighborhood: 1226 | | | | |
|---------------------------|------------------|----------------|---------------------|----------------|
| | Assessment Ratio | SalesPrice | Adjusted Sale Price | Value |
| Low Value | 90.38% | \$765,000.00 | \$765,000.00 | \$851,951.00 |
| High Value | 111.37% | \$1,260,000.00 | \$1,260,000.00 | \$1,138,819.00 |
| Median | 100.87% | \$1,012,500.00 | \$1,012,500.00 | \$995,385.00 |
| Mean | 100.87% | \$1,012,500.00 | \$1,012,500.00 | \$995,385.00 |
| Weighted Mean | 98.31% | | | |
| Standard Deviation | 14.84 | 350,017.86 | 350,017.86 | 202,846.31 |
| Coefficient of Dispersion | 10.40 | | | |
| Coefficient of Variation | 14.71 | | | |

| Neighborhood: 1251 | | | | |
|---------------------------|------------------|--------------|---------------------|--------------|
| | Assessment Ratio | SalesPrice | Adjusted Sale Price | Value |
| Low Value | 85.79% | \$350,000.00 | \$350,000.00 | \$355,931.00 |
| High Value | 112.26% | \$698,569.00 | \$698,569.00 | \$692,287.00 |
| Median | 101.26% | \$517,800.50 | \$517,800.50 | \$519,740.00 |
| Mean | 101.08% | \$522,249.98 | \$522,249.98 | \$525,673.28 |
| Weighted Mean | 100.66% | | | |
| Standard Deviation | 5.48 | 72,421.89 | 72,421.89 | 60,699.46 |
| Coefficient of Dispersion | 4.35 | | | |
| Coefficient of Variation | 5.42 | | | |

| Neighborhood: 1252 | | | | |
|--------------------|------------------|------------|---------------------|-------|
| | Assessment Ratio | SalesPrice | Adjusted Sale Price | Value |

Sales Ratio Report

As Of: 3/18/2026 Tax Year: 2026 Values - Final Sale Price - Actual

APPRAISAL

| Neighborhood: 1252 | | | | | |
|---------------------------|------------------|--------------|---------------------|--------------|--|
| | Assessment Ratio | SalesPrice | Adjusted Sale Price | Value | |
| Low Value | 89.38% | \$593,167.00 | \$593,167.00 | \$646,927.00 | |
| High Value | 114.15% | \$851,902.00 | \$851,902.00 | \$789,190.00 | |
| Median | 100.88% | \$675,137.00 | \$675,137.00 | \$688,394.00 | |
| Mean | 100.83% | \$692,590.82 | \$692,590.82 | \$695,741.98 | |
| Weighted Mean | 100.45% | | | | |
| Standard Deviation | 6.01 | 55,946.18 | 55,946.18 | 33,185.28 | |
| Coefficient of Dispersion | 4.86 | | | | |
| Coefficient of Variation | 5.96 | | | | |

| Neighborhood: 1255 | | | | | |
|---------------------------|------------------|--------------|---------------------|--------------|--|
| | Assessment Ratio | SalesPrice | Adjusted Sale Price | Value | |
| Low Value | 88.89% | \$247,000.00 | \$247,000.00 | \$254,216.00 | |
| High Value | 113.24% | \$540,000.00 | \$540,000.00 | \$556,899.00 | |
| Median | 100.93% | \$395,050.00 | \$395,050.00 | \$398,376.50 | |
| Mean | 100.84% | \$390,823.23 | \$390,823.23 | \$393,211.41 | |
| Weighted Mean | 100.61% | | | | |
| Standard Deviation | 5.31 | 79,009.54 | 79,009.54 | 77,711.31 | |
| Coefficient of Dispersion | 4.26 | | | | |
| Coefficient of Variation | 5.26 | | | | |

| Neighborhood: 1260 | | | | | |
|--------------------|------------------|------------|---------------------|-------|--|
| | Assessment Ratio | SalesPrice | Adjusted Sale Price | Value | |

Sales Ratio Report

As Of: 3/18/2026 Tax Year: 2026 Values - Final Sale Price - Actual

APPRAISAL

| Neighborhood: 1260 | | | | | |
|---------------------------|------------------|--------------|---------------------|--------------|--|
| | Assessment Ratio | SalesPrice | Adjusted Sale Price | Value | |
| Low Value | 99.27% | \$150,000.00 | \$150,000.00 | \$148,908.00 | |
| High Value | 113.88% | \$230,000.00 | \$230,000.00 | \$254,637.00 | |
| Median | 101.24% | \$223,600.00 | \$223,600.00 | \$232,859.00 | |
| Mean | 104.80% | \$201,200.00 | \$201,200.00 | \$212,134.67 | |
| Weighted Mean | 105.43% | | | | |
| Standard Deviation | 7.93 | 44,455.82 | 44,455.82 | 55,828.12 | |
| Coefficient of Dispersion | 4.81 | | | | |
| Coefficient of Variation | 7.56 | | | | |

| Neighborhood: 1270 | | | | | |
|---------------------------|------------------|--------------|---------------------|--------------|--|
| | Assessment Ratio | SalesPrice | Adjusted Sale Price | Value | |
| Low Value | 85.11% | \$249,000.00 | \$249,000.00 | \$226,456.00 | |
| High Value | 109.18% | \$294,000.00 | \$294,000.00 | \$304,609.00 | |
| Median | 99.97% | \$275,000.00 | \$275,000.00 | \$249,935.00 | |
| Mean | 96.76% | \$270,285.71 | \$270,285.71 | \$262,012.29 | |
| Weighted Mean | 96.94% | | | | |
| Standard Deviation | 8.93 | 16,570.20 | 16,570.20 | 34,030.84 | |
| Coefficient of Dispersion | 7.15 | | | | |
| Coefficient of Variation | 9.23 | | | | |

| Neighborhood: 1290 | | | | | |
|--------------------|------------------|------------|---------------------|-------|--|
| | Assessment Ratio | SalesPrice | Adjusted Sale Price | Value | |

Sales Ratio Report

As Of: 3/18/2026 Tax Year: 2026 Values - Final Sale Price - Actual

APPRAISAL

Neighborhood: 1290

| | Assessment Ratio | SalesPrice | Adjusted Sale Price | Value |
|---------------------------|------------------|----------------|---------------------|----------------|
| Low Value | 86.18% | \$655,000.00 | \$655,000.00 | \$615,820.00 |
| High Value | 113.96% | \$1,280,000.00 | \$1,280,000.00 | \$1,126,547.00 |
| Median | 98.73% | \$861,725.00 | \$861,725.00 | \$890,990.00 |
| Mean | 100.81% | \$902,029.76 | \$902,029.76 | \$903,574.57 |
| Weighted Mean | 100.17% | | | |
| Standard Deviation | 8.42 | 177,330.48 | 177,330.48 | 154,357.83 |
| Coefficient of Dispersion | 7.04 | | | |
| Coefficient of Variation | 8.35 | | | |

Neighborhood: 1330

| | Assessment Ratio | SalesPrice | Adjusted Sale Price | Value |
|---------------------------|------------------|--------------|---------------------|--------------|
| Low Value | 85.80% | \$271,000.00 | \$271,000.00 | \$254,410.00 |
| High Value | 115.47% | \$505,000.00 | \$505,000.00 | \$494,590.00 |
| Median | 100.91% | \$361,000.00 | \$361,000.00 | \$359,701.50 |
| Mean | 100.44% | \$366,059.00 | \$366,059.00 | \$367,231.87 |
| Weighted Mean | 100.32% | | | |
| Standard Deviation | 8.25 | 51,338.58 | 51,338.58 | 56,816.52 |
| Coefficient of Dispersion | 6.83 | | | |
| Coefficient of Variation | 8.22 | | | |

Neighborhood: 1338

| | Assessment Ratio | SalesPrice | Adjusted Sale Price | Value |
|--|------------------|------------|---------------------|-------|
|--|------------------|------------|---------------------|-------|

Sales Ratio Report

As Of: 3/18/2026 Tax Year: 2026 Values - Final Sale Price - Actual

APPRAISAL

| Neighborhood: 1338 | | | | |
|---------------------------|------------------|----------------|---------------------|----------------|
| | Assessment Ratio | SalesPrice | Adjusted Sale Price | Value |
| Low Value | 101.36% | \$1,625,000.00 | \$1,625,000.00 | \$1,647,163.00 |
| High Value | 107.68% | \$1,937,874.00 | \$1,937,874.00 | \$2,086,737.00 |
| Median | 104.52% | \$1,781,437.00 | \$1,781,437.00 | \$1,866,950.00 |
| Mean | 104.52% | \$1,781,437.00 | \$1,781,437.00 | \$1,866,950.00 |
| Weighted Mean | 104.80% | | | |
| Standard Deviation | 4.47 | 221,235.33 | 221,235.33 | 310,825.76 |
| Coefficient of Dispersion | 3.02 | | | |
| Coefficient of Variation | 4.27 | | | |

| Neighborhood: 1340 | | | | |
|---------------------------|------------------|--------------|---------------------|--------------|
| | Assessment Ratio | SalesPrice | Adjusted Sale Price | Value |
| Low Value | 87.77% | \$300,000.00 | \$300,000.00 | \$284,694.00 |
| High Value | 115.18% | \$515,000.00 | \$515,000.00 | \$577,041.00 |
| Median | 102.23% | \$378,500.00 | \$378,500.00 | \$373,577.50 |
| Mean | 102.16% | \$387,558.93 | \$387,558.93 | \$395,397.61 |
| Weighted Mean | 102.02% | | | |
| Standard Deviation | 6.75 | 64,831.48 | 64,831.48 | 68,891.55 |
| Coefficient of Dispersion | 4.92 | | | |
| Coefficient of Variation | 6.61 | | | |

| Neighborhood: 1342 | | | | |
|--------------------|------------------|------------|---------------------|-------|
| | Assessment Ratio | SalesPrice | Adjusted Sale Price | Value |

Sales Ratio Report

As Of: 3/18/2026 Tax Year: 2026 Values - Final Sale Price - Actual

APPRAISAL

Neighborhood: 1342

| | Assessment Ratio | SalesPrice | Adjusted Sale Price | Value |
|---------------------------|------------------|--------------|---------------------|--------------|
| Low Value | 91.10% | \$265,000.00 | \$265,000.00 | \$290,434.00 |
| High Value | 109.60% | \$450,000.00 | \$450,000.00 | \$409,950.00 |
| Median | 104.67% | \$310,000.00 | \$310,000.00 | \$324,487.00 |
| Mean | 101.79% | \$341,666.67 | \$341,666.67 | \$341,623.67 |
| Weighted Mean | 99.99% | | | |
| Standard Deviation | 9.58 | 96,479.70 | 96,479.70 | 61,573.27 |
| Coefficient of Dispersion | 5.89 | | | |
| Coefficient of Variation | 9.41 | | | |

Neighborhood: 1350

| | Assessment Ratio | SalesPrice | Adjusted Sale Price | Value |
|---------------------------|------------------|--------------|---------------------|--------------|
| Low Value | 100.54% | \$235,000.00 | \$235,000.00 | \$238,762.00 |
| High Value | 101.60% | \$249,000.00 | \$249,000.00 | \$250,339.00 |
| Median | 101.07% | \$242,000.00 | \$242,000.00 | \$244,550.50 |
| Mean | 101.07% | \$242,000.00 | \$242,000.00 | \$244,550.50 |
| Weighted Mean | 101.05% | | | |
| Standard Deviation | 0.75 | 9,899.49 | 9,899.49 | 8,186.18 |
| Coefficient of Dispersion | 0.53 | | | |
| Coefficient of Variation | 0.74 | | | |

Neighborhood: 1380

| | Assessment Ratio | SalesPrice | Adjusted Sale Price | Value |
|--|------------------|------------|---------------------|-------|
|--|------------------|------------|---------------------|-------|

Sales Ratio Report

As Of: 3/18/2026 Tax Year: 2026 Values - Final Sale Price - Actual

APPRAISAL

| Neighborhood: 1380 | | | | | |
|---------------------------|------------------|--------------|---------------------|--------------|--|
| | Assessment Ratio | SalesPrice | Adjusted Sale Price | Value | |
| Low Value | 89.78% | \$225,000.00 | \$225,000.00 | \$206,501.00 | |
| High Value | 115.38% | \$330,000.00 | \$330,000.00 | \$351,909.00 | |
| Median | 101.30% | \$255,000.00 | \$255,000.00 | \$265,723.00 | |
| Mean | 101.63% | \$261,447.37 | \$261,447.37 | \$265,857.79 | |
| Weighted Mean | 101.69% | | | | |
| Standard Deviation | 8.19 | 33,621.63 | 33,621.63 | 41,295.55 | |
| Coefficient of Dispersion | 6.68 | | | | |
| Coefficient of Variation | 8.06 | | | | |

| Neighborhood: 1390 | | | | | |
|---------------------------|------------------|--------------|---------------------|--------------|--|
| | Assessment Ratio | SalesPrice | Adjusted Sale Price | Value | |
| Low Value | 92.79% | \$208,000.00 | \$208,000.00 | \$208,936.00 | |
| High Value | 114.98% | \$330,000.00 | \$330,000.00 | \$324,586.00 | |
| Median | 98.74% | \$278,500.00 | \$278,500.00 | \$284,863.00 | |
| Mean | 100.68% | \$275,666.67 | \$275,666.67 | \$275,500.50 | |
| Weighted Mean | 99.94% | | | | |
| Standard Deviation | 7.48 | 56,429.31 | 56,429.31 | 47,087.23 | |
| Coefficient of Dispersion | 4.19 | | | | |
| Coefficient of Variation | 7.43 | | | | |

| Neighborhood: 1435 | | | | | |
|--------------------|------------------|------------|---------------------|-------|--|
| | Assessment Ratio | SalesPrice | Adjusted Sale Price | Value | |

Sales Ratio Report

As Of: 3/18/2026 Tax Year: 2026 Values - Final Sale Price - Actual

APPRAISAL

| Neighborhood: 1435 | | | | |
|---------------------------|------------------|--------------|---------------------|--------------|
| | Assessment Ratio | SalesPrice | Adjusted Sale Price | Value |
| Low Value | 89.10% | \$247,000.00 | \$247,000.00 | \$247,658.00 |
| High Value | 115.61% | \$575,000.00 | \$575,000.00 | \$565,538.00 |
| Median | 101.22% | \$345,000.00 | \$345,000.00 | \$340,365.00 |
| Mean | 100.74% | \$348,095.00 | \$348,095.00 | \$349,756.55 |
| Weighted Mean | 100.48% | | | |
| Standard Deviation | 5.54 | 61,138.66 | 61,138.66 | 59,379.20 |
| Coefficient of Dispersion | 4.29 | | | |
| Coefficient of Variation | 5.50 | | | |

| Neighborhood: 1460 | | | | |
|---------------------------|------------------|--------------|---------------------|--------------|
| | Assessment Ratio | SalesPrice | Adjusted Sale Price | Value |
| Low Value | 97.54% | \$101,000.00 | \$101,000.00 | \$107,476.00 |
| High Value | 106.41% | \$125,000.00 | \$125,000.00 | \$121,923.00 |
| Median | 101.98% | \$113,000.00 | \$113,000.00 | \$114,699.50 |
| Mean | 101.98% | \$113,000.00 | \$113,000.00 | \$114,699.50 |
| Weighted Mean | 101.50% | | | |
| Standard Deviation | 6.27 | 16,970.56 | 16,970.56 | 10,215.57 |
| Coefficient of Dispersion | 4.35 | | | |
| Coefficient of Variation | 6.15 | | | |

| Neighborhood: 1485 | | | | |
|--------------------|------------------|------------|---------------------|-------|
| | Assessment Ratio | SalesPrice | Adjusted Sale Price | Value |

Sales Ratio Report

As Of: 3/18/2026 Tax Year: 2026 Values - Final Sale Price - Actual

APPRAISAL

Neighborhood: 1485

| | Assessment Ratio | SalesPrice | Adjusted Sale Price | Value |
|---------------------------|------------------|--------------|---------------------|--------------|
| Low Value | 89.30% | \$449,000.00 | \$449,000.00 | \$460,833.00 |
| High Value | 113.06% | \$679,000.00 | \$679,000.00 | \$664,773.00 |
| Median | 101.26% | \$487,500.00 | \$487,500.00 | \$512,087.50 |
| Mean | 101.93% | \$512,246.67 | \$512,246.67 | \$520,871.63 |
| Weighted Mean | 101.68% | | | |
| Standard Deviation | 5.32 | 58,024.74 | 58,024.74 | 52,645.97 |
| Coefficient of Dispersion | 3.92 | | | |
| Coefficient of Variation | 5.21 | | | |

Neighborhood: 1491

| | Assessment Ratio | SalesPrice | Adjusted Sale Price | Value |
|---------------------------|------------------|--------------|---------------------|--------------|
| Low Value | 94.06% | \$460,000.00 | \$460,000.00 | \$475,931.00 |
| High Value | 112.15% | \$749,900.00 | \$749,900.00 | \$705,381.00 |
| Median | 101.95% | \$600,000.00 | \$600,000.00 | \$592,170.00 |
| Mean | 102.07% | \$583,353.85 | \$583,353.85 | \$592,719.38 |
| Weighted Mean | 101.61% | | | |
| Standard Deviation | 5.11 | 85,791.25 | 85,791.25 | 70,782.94 |
| Coefficient of Dispersion | 3.96 | | | |
| Coefficient of Variation | 5.00 | | | |

Neighborhood: 1492

| | Assessment Ratio | SalesPrice | Adjusted Sale Price | Value |
|--|------------------|------------|---------------------|-------|
|--|------------------|------------|---------------------|-------|

Sales Ratio Report

As Of: 3/18/2026 Tax Year: 2026 Values - Final Sale Price - Actual

APPRAISAL

Neighborhood: 1492

| | Assessment Ratio | SalesPrice | Adjusted Sale Price | Value |
|---------------------------|------------------|--------------|---------------------|--------------|
| Low Value | 93.13% | \$385,000.00 | \$385,000.00 | \$386,295.00 |
| High Value | 113.65% | \$585,000.00 | \$585,000.00 | \$556,886.00 |
| Median | 100.34% | \$490,000.00 | \$490,000.00 | \$532,551.00 |
| Mean | 103.23% | \$494,700.00 | \$494,700.00 | \$508,381.29 |
| Weighted Mean | 102.77% | | | |
| Standard Deviation | 8.47 | 69,520.24 | 69,520.24 | 62,450.71 |
| Coefficient of Dispersion | 6.81 | | | |
| Coefficient of Variation | 8.21 | | | |

Neighborhood: 1493

| | Assessment Ratio | SalesPrice | Adjusted Sale Price | Value |
|---------------------------|------------------|--------------|---------------------|--------------|
| Low Value | 98.24% | \$750,000.00 | \$750,000.00 | \$752,243.00 |
| High Value | 104.11% | \$990,000.00 | \$990,000.00 | \$972,598.00 |
| Median | 100.30% | \$925,000.00 | \$925,000.00 | \$963,014.00 |
| Mean | 100.88% | \$888,333.33 | \$888,333.33 | \$895,951.67 |
| Weighted Mean | 100.86% | | | |
| Standard Deviation | 2.98 | 124,130.31 | 124,130.31 | 124,547.58 |
| Coefficient of Dispersion | 1.95 | | | |
| Coefficient of Variation | 2.95 | | | |

Neighborhood: 1498

| | Assessment Ratio | SalesPrice | Adjusted Sale Price | Value |
|--|------------------|------------|---------------------|-------|
|--|------------------|------------|---------------------|-------|

Sales Ratio Report

As Of: 3/18/2026 Tax Year: 2026 Values - Final Sale Price - Actual

APPRAISAL

Neighborhood: 1498

| | Assessment Ratio | SalesPrice | Adjusted Sale Price | Value |
|---------------------------|------------------|----------------|---------------------|----------------|
| Low Value | 85.41% | \$534,000.00 | \$534,000.00 | \$582,585.00 |
| High Value | 109.10% | \$1,850,000.00 | \$1,850,000.00 | \$1,909,324.00 |
| Median | 100.93% | \$775,000.00 | \$775,000.00 | \$782,237.00 |
| Mean | 98.61% | \$872,166.67 | \$872,166.67 | \$856,471.13 |
| Weighted Mean | 98.20% | | | |
| Standard Deviation | 8.24 | 312,574.20 | 312,574.20 | 317,297.08 |
| Coefficient of Dispersion | 6.59 | | | |
| Coefficient of Variation | 8.35 | | | |

Neighborhood: 1501

| | Assessment Ratio | SalesPrice | Adjusted Sale Price | Value |
|---------------------------|------------------|--------------|---------------------|--------------|
| Low Value | 92.01% | \$364,900.00 | \$364,900.00 | \$392,454.00 |
| High Value | 115.09% | \$517,000.00 | \$517,000.00 | \$530,570.00 |
| Median | 102.83% | \$420,000.00 | \$420,000.00 | \$428,776.00 |
| Mean | 104.33% | \$421,742.86 | \$421,742.86 | \$438,343.36 |
| Weighted Mean | 103.94% | | | |
| Standard Deviation | 8.67 | 43,562.28 | 43,562.28 | 42,885.24 |
| Coefficient of Dispersion | 7.43 | | | |
| Coefficient of Variation | 8.31 | | | |

Neighborhood: 1502

| | Assessment Ratio | SalesPrice | Adjusted Sale Price | Value |
|--|------------------|------------|---------------------|-------|
|--|------------------|------------|---------------------|-------|

Sales Ratio Report

As Of: 3/18/2026 Tax Year: 2026 Values - Final Sale Price - Actual

APPRAISAL

Neighborhood: 1502

| | Assessment Ratio | SalesPrice | Adjusted Sale Price | Value |
|---------------------------|------------------|--------------|---------------------|--------------|
| Low Value | 86.66% | \$310,000.00 | \$310,000.00 | \$324,308.00 |
| High Value | 113.75% | \$489,000.00 | \$489,000.00 | \$495,575.00 |
| Median | 101.26% | \$380,750.00 | \$380,750.00 | \$376,496.50 |
| Mean | 99.71% | \$383,627.75 | \$383,627.75 | \$381,464.36 |
| Weighted Mean | 99.44% | | | |
| Standard Deviation | 7.14 | 37,664.90 | 37,664.90 | 36,800.37 |
| Coefficient of Dispersion | 5.58 | | | |
| Coefficient of Variation | 7.16 | | | |

Neighborhood: 1503

| | Assessment Ratio | SalesPrice | Adjusted Sale Price | Value |
|---------------------------|------------------|--------------|---------------------|--------------|
| Low Value | 88.21% | \$365,000.00 | \$365,000.00 | \$385,483.00 |
| High Value | 115.17% | \$610,000.00 | \$610,000.00 | \$612,359.00 |
| Median | 100.79% | \$460,000.00 | \$460,000.00 | \$457,569.00 |
| Mean | 100.91% | \$473,121.29 | \$473,121.29 | \$477,030.54 |
| Weighted Mean | 100.83% | | | |
| Standard Deviation | 6.26 | 62,029.58 | 62,029.58 | 66,298.33 |
| Coefficient of Dispersion | 4.78 | | | |
| Coefficient of Variation | 6.21 | | | |

Neighborhood: 1504

| | Assessment Ratio | SalesPrice | Adjusted Sale Price | Value |
|--|------------------|------------|---------------------|-------|
|--|------------------|------------|---------------------|-------|

Sales Ratio Report

As Of: 3/18/2026 Tax Year: 2026 Values - Final Sale Price - Actual

APPRAISAL

Neighborhood: 1504

| | Assessment Ratio | SalesPrice | Adjusted Sale Price | Value |
|---------------------------|------------------|--------------|---------------------|--------------|
| Low Value | 94.68% | \$427,000.00 | \$427,000.00 | \$450,205.00 |
| High Value | 111.78% | \$612,000.00 | \$612,000.00 | \$617,080.00 |
| Median | 101.74% | \$525,000.00 | \$525,000.00 | \$543,283.00 |
| Mean | 102.45% | \$530,957.69 | \$530,957.69 | \$542,840.38 |
| Weighted Mean | 102.24% | | | |
| Standard Deviation | 4.08 | 59,075.93 | 59,075.93 | 53,480.55 |
| Coefficient of Dispersion | 2.86 | | | |
| Coefficient of Variation | 3.99 | | | |

Neighborhood: 1505

| | Assessment Ratio | SalesPrice | Adjusted Sale Price | Value |
|---------------------------|------------------|--------------|---------------------|--------------|
| Low Value | 90.15% | \$525,000.00 | \$525,000.00 | \$547,016.00 |
| High Value | 115.24% | \$680,000.00 | \$680,000.00 | \$709,868.00 |
| Median | 101.04% | \$626,750.00 | \$626,750.00 | \$625,230.00 |
| Mean | 101.01% | \$619,916.67 | \$619,916.67 | \$625,138.67 |
| Weighted Mean | 100.84% | | | |
| Standard Deviation | 8.89 | 51,861.76 | 51,861.76 | 65,879.03 |
| Coefficient of Dispersion | 6.81 | | | |
| Coefficient of Variation | 8.80 | | | |

Neighborhood: 1511

| | Assessment Ratio | SalesPrice | Adjusted Sale Price | Value |
|--|------------------|------------|---------------------|-------|
|--|------------------|------------|---------------------|-------|

Sales Ratio Report

As Of: 3/18/2026 Tax Year: 2026 Values - Final Sale Price - Actual

APPRAISAL

Neighborhood: 1511

| | Assessment Ratio | SalesPrice | Adjusted Sale Price | Value |
|---------------------------|------------------|--------------|---------------------|--------------|
| Low Value | 100.12% | \$675,000.00 | \$675,000.00 | \$689,081.00 |
| High Value | 110.54% | \$805,000.00 | \$805,000.00 | \$833,189.00 |
| Median | 101.34% | \$710,000.00 | \$710,000.00 | \$746,117.00 |
| Mean | 104.59% | \$726,000.00 | \$726,000.00 | \$758,768.60 |
| Weighted Mean | 104.51% | | | |
| Standard Deviation | 5.05 | 55,610.25 | 55,610.25 | 59,858.11 |
| Coefficient of Dispersion | 3.69 | | | |
| Coefficient of Variation | 4.83 | | | |

Neighborhood: 1512

| | Assessment Ratio | SalesPrice | Adjusted Sale Price | Value |
|---------------------------|------------------|--------------|---------------------|--------------|
| Low Value | 94.69% | \$402,500.00 | \$402,500.00 | \$403,403.00 |
| High Value | 112.82% | \$695,000.00 | \$695,000.00 | \$664,138.00 |
| Median | 101.21% | \$530,000.00 | \$530,000.00 | \$520,778.00 |
| Mean | 102.36% | \$526,500.00 | \$526,500.00 | \$536,221.82 |
| Weighted Mean | 101.85% | | | |
| Standard Deviation | 5.37 | 107,279.54 | 107,279.54 | 96,675.26 |
| Coefficient of Dispersion | 3.70 | | | |
| Coefficient of Variation | 5.24 | | | |

Neighborhood: 1513

| | Assessment Ratio | SalesPrice | Adjusted Sale Price | Value |
|--|------------------|------------|---------------------|-------|
|--|------------------|------------|---------------------|-------|

Sales Ratio Report

As Of: 3/18/2026 Tax Year: 2026 Values - Final Sale Price - Actual

APPRAISAL

Neighborhood: 1513

| | Assessment Ratio | SalesPrice | Adjusted Sale Price | Value |
|---------------------------|------------------|--------------|---------------------|--------------|
| Low Value | 97.31% | \$385,000.00 | \$385,000.00 | \$385,819.00 |
| High Value | 103.90% | \$650,000.00 | \$650,000.00 | \$675,349.00 |
| Median | 100.86% | \$509,000.00 | \$509,000.00 | \$508,287.00 |
| Mean | 100.73% | \$513,250.00 | \$513,250.00 | \$519,435.50 |
| Weighted Mean | 101.21% | | | |
| Standard Deviation | 2.74 | 140,174.59 | 140,174.59 | 153,568.77 |
| Coefficient of Dispersion | 1.95 | | | |
| Coefficient of Variation | 2.72 | | | |

Neighborhood: 1514

| | Assessment Ratio | SalesPrice | Adjusted Sale Price | Value |
|---------------------------|------------------|--------------|---------------------|--------------|
| Low Value | 89.09% | \$327,500.00 | \$327,500.00 | \$367,776.00 |
| High Value | 113.49% | \$560,000.00 | \$560,000.00 | \$624,185.00 |
| Median | 100.85% | \$430,000.00 | \$430,000.00 | \$435,382.50 |
| Mean | 101.81% | \$445,660.00 | \$445,660.00 | \$453,623.63 |
| Weighted Mean | 101.79% | | | |
| Standard Deviation | 6.04 | 60,330.03 | 60,330.03 | 68,724.92 |
| Coefficient of Dispersion | 4.75 | | | |
| Coefficient of Variation | 5.93 | | | |

Neighborhood: 1516

| | Assessment Ratio | SalesPrice | Adjusted Sale Price | Value |
|--|------------------|------------|---------------------|-------|
|--|------------------|------------|---------------------|-------|

Sales Ratio Report

As Of: 3/18/2026 Tax Year: 2026 Values - Final Sale Price - Actual

APPRAISAL

| Neighborhood: 1516 | | | | | |
|---------------------------|------------------|--------------|---------------------|--------------|--|
| | Assessment Ratio | SalesPrice | Adjusted Sale Price | Value | |
| Low Value | 85.39% | \$521,000.00 | \$521,000.00 | \$530,439.00 | |
| High Value | 106.46% | \$935,000.00 | \$935,000.00 | \$834,861.00 | |
| Median | 102.18% | \$619,500.00 | \$619,500.00 | \$641,734.00 | |
| Mean | 99.60% | \$635,664.29 | \$635,450.00 | \$628,283.14 | |
| Weighted Mean | 98.84% | | | | |
| Standard Deviation | 6.24 | 117,519.36 | 117,700.00 | 87,235.55 | |
| Coefficient of Dispersion | 4.53 | | | | |
| Coefficient of Variation | 6.26 | | | | |

| Neighborhood: 1517 | | | | | |
|---------------------------|------------------|--------------|---------------------|--------------|--|
| | Assessment Ratio | SalesPrice | Adjusted Sale Price | Value | |
| Low Value | 95.13% | \$575,997.00 | \$575,997.00 | \$571,276.00 | |
| High Value | 106.43% | \$690,000.00 | \$690,000.00 | \$681,836.00 | |
| Median | 98.82% | \$600,500.00 | \$600,500.00 | \$613,024.00 | |
| Mean | 100.13% | \$622,165.67 | \$622,165.67 | \$622,045.33 | |
| Weighted Mean | 99.98% | | | | |
| Standard Deviation | 5.76 | 60,010.18 | 60,010.18 | 55,829.35 | |
| Coefficient of Dispersion | 3.81 | | | | |
| Coefficient of Variation | 5.75 | | | | |

| Neighborhood: 1521 | | | | | |
|--------------------|------------------|------------|---------------------|-------|--|
| | Assessment Ratio | SalesPrice | Adjusted Sale Price | Value | |

Sales Ratio Report

As Of: 3/18/2026 Tax Year: 2026 Values - Final Sale Price - Actual

APPRAISAL

Neighborhood: 1521

| | Assessment Ratio | SalesPrice | Adjusted Sale Price | Value |
|---------------------------|------------------|--------------|---------------------|--------------|
| Low Value | 92.19% | \$354,000.00 | \$354,000.00 | \$348,395.00 |
| High Value | 115.11% | \$900,000.00 | \$900,000.00 | \$829,672.00 |
| Median | 99.26% | \$434,250.00 | \$434,250.00 | \$464,146.00 |
| Mean | 100.15% | \$501,250.00 | \$501,250.00 | \$495,862.50 |
| Weighted Mean | 98.93% | | | |
| Standard Deviation | 8.07 | 203,707.57 | 203,707.57 | 176,295.58 |
| Coefficient of Dispersion | 5.01 | | | |
| Coefficient of Variation | 8.05 | | | |

Neighborhood: 1550

| | Assessment Ratio | SalesPrice | Adjusted Sale Price | Value |
|---------------------------|------------------|--------------|---------------------|--------------|
| Low Value | 101.16% | \$73,000.00 | \$73,000.00 | \$80,297.00 |
| High Value | 113.19% | \$190,000.00 | \$190,000.00 | \$215,056.00 |
| Median | 107.33% | \$172,450.00 | \$172,450.00 | \$177,254.50 |
| Mean | 107.25% | \$151,975.00 | \$151,975.00 | \$162,465.50 |
| Weighted Mean | 106.90% | | | |
| Standard Deviation | 5.37 | 54,272.18 | 54,272.18 | 58,167.17 |
| Coefficient of Dispersion | 4.04 | | | |
| Coefficient of Variation | 5.01 | | | |

Neighborhood: 1570

| | Assessment Ratio | SalesPrice | Adjusted Sale Price | Value |
|--|------------------|------------|---------------------|-------|
|--|------------------|------------|---------------------|-------|

Sales Ratio Report

FT. BEND CENTRAL APPRAISAL DISTRICT

As Of: 3/18/2026 Tax Year: 2026 Values - Final Sale Price - Actual

APPRAISAL

| Neighborhood: 1570 | | | | | |
|---------------------------|------------------|--------------|---------------------|--------------|--|
| | Assessment Ratio | SalesPrice | Adjusted Sale Price | Value | |
| Low Value | 94.33% | \$144,000.00 | \$144,000.00 | \$135,830.00 | |
| High Value | 114.25% | \$275,000.00 | \$275,000.00 | \$314,191.00 | |
| Median | 110.03% | \$205,000.00 | \$205,000.00 | \$225,558.00 | |
| Mean | 106.20% | \$208,000.00 | \$208,000.00 | \$225,193.00 | |
| Weighted Mean | 108.27% | | | | |
| Standard Deviation | 10.50 | 65,551.51 | 65,551.51 | 89,181.06 | |
| Coefficient of Dispersion | 6.04 | | | | |
| Coefficient of Variation | 9.89 | | | | |

| Neighborhood: 1590 | | | | | |
|---------------------------|------------------|--------------|---------------------|--------------|--|
| | Assessment Ratio | SalesPrice | Adjusted Sale Price | Value | |
| Low Value | 99.47% | \$315,000.00 | \$315,000.00 | \$317,323.00 | |
| High Value | 104.41% | \$340,000.00 | \$340,000.00 | \$346,214.00 | |
| Median | 101.83% | \$319,000.00 | \$319,000.00 | \$328,891.00 | |
| Mean | 101.90% | \$324,666.67 | \$324,666.67 | \$330,809.33 | |
| Weighted Mean | 101.89% | | | | |
| Standard Deviation | 2.47 | 13,428.82 | 13,428.82 | 14,540.72 | |
| Coefficient of Dispersion | 1.62 | | | | |
| Coefficient of Variation | 2.42 | | | | |

| Neighborhood: 1600 | | | | | |
|--------------------|------------------|------------|---------------------|-------|--|
| | Assessment Ratio | SalesPrice | Adjusted Sale Price | Value | |

Sales Ratio Report

As Of: 3/18/2026 Tax Year: 2026 Values - Final Sale Price - Actual

APPRAISAL

| Neighborhood: 1600 | | | | | |
|---------------------------|------------------|--------------|---------------------|--------------|--|
| | Assessment Ratio | SalesPrice | Adjusted Sale Price | Value | |
| Low Value | 93.50% | \$206,500.00 | \$206,500.00 | \$215,051.00 | |
| High Value | 110.24% | \$242,000.00 | \$242,000.00 | \$266,779.00 | |
| Median | 100.83% | \$231,500.00 | \$231,500.00 | \$221,063.00 | |
| Mean | 101.03% | \$227,083.33 | \$227,083.33 | \$229,389.33 | |
| Weighted Mean | 101.02% | | | | |
| Standard Deviation | 6.16 | 13,230.33 | 13,230.33 | 19,707.95 | |
| Coefficient of Dispersion | 4.39 | | | | |
| Coefficient of Variation | 6.10 | | | | |

| Neighborhood: 1730 | | | | | |
|---------------------------|------------------|--------------|---------------------|--------------|--|
| | Assessment Ratio | SalesPrice | Adjusted Sale Price | Value | |
| Low Value | 95.27% | \$130,000.00 | \$130,000.00 | \$144,031.00 | |
| High Value | 114.03% | \$250,000.00 | \$250,000.00 | \$276,901.00 | |
| Median | 100.97% | \$209,000.00 | \$209,000.00 | \$212,603.50 | |
| Mean | 102.75% | \$203,590.50 | \$203,590.50 | \$209,090.00 | |
| Weighted Mean | 102.70% | | | | |
| Standard Deviation | 6.75 | 33,650.50 | 33,650.50 | 37,735.01 | |
| Coefficient of Dispersion | 5.53 | | | | |
| Coefficient of Variation | 6.57 | | | | |

| Neighborhood: 1820 | | | | | |
|--------------------|------------------|------------|---------------------|-------|--|
| | Assessment Ratio | SalesPrice | Adjusted Sale Price | Value | |

Sales Ratio Report

As Of: 3/18/2026 Tax Year: 2026 Values - Final Sale Price - Actual

APPRAISAL

Neighborhood: 1820

| | Assessment Ratio | SalesPrice | Adjusted Sale Price | Value |
|---------------------------|------------------|--------------|---------------------|--------------|
| Low Value | 100.72% | \$310,000.00 | \$310,000.00 | \$317,282.00 |
| High Value | 103.28% | \$315,000.00 | \$315,000.00 | \$320,177.00 |
| Median | 102.00% | \$312,500.00 | \$312,500.00 | \$318,729.50 |
| Mean | 102.00% | \$312,500.00 | \$312,500.00 | \$318,729.50 |
| Weighted Mean | 101.99% | | | |
| Standard Deviation | 1.81 | 3,535.53 | 3,535.53 | 2,047.07 |
| Coefficient of Dispersion | 1.25 | | | |
| Coefficient of Variation | 1.77 | | | |

Neighborhood: 1830

| | Assessment Ratio | SalesPrice | Adjusted Sale Price | Value |
|---------------------------|------------------|--------------|---------------------|--------------|
| Low Value | 106.64% | \$214,900.00 | \$214,900.00 | \$239,473.00 |
| High Value | 111.43% | \$237,000.00 | \$237,000.00 | \$252,737.00 |
| Median | 109.04% | \$225,950.00 | \$225,950.00 | \$246,105.00 |
| Mean | 109.04% | \$225,950.00 | \$225,950.00 | \$246,105.00 |
| Weighted Mean | 108.92% | | | |
| Standard Deviation | 3.39 | 15,627.06 | 15,627.06 | 9,379.06 |
| Coefficient of Dispersion | 2.20 | | | |
| Coefficient of Variation | 3.11 | | | |

Neighborhood: 1890

| | Assessment Ratio | SalesPrice | Adjusted Sale Price | Value |
|--|------------------|------------|---------------------|-------|
|--|------------------|------------|---------------------|-------|

Sales Ratio Report

As Of: 3/18/2026 Tax Year: 2026 Values - Final Sale Price - Actual

APPRAISAL

Neighborhood: 1890

| | Assessment Ratio | SalesPrice | Adjusted Sale Price | Value |
|---------------------------|------------------|--------------|---------------------|--------------|
| Low Value | 88.84% | \$305,000.00 | \$305,000.00 | \$350,312.00 |
| High Value | 114.86% | \$575,000.00 | \$575,000.00 | \$510,845.00 |
| Median | 101.85% | \$440,000.00 | \$440,000.00 | \$430,578.50 |
| Mean | 101.85% | \$440,000.00 | \$440,000.00 | \$430,578.50 |
| Weighted Mean | 97.86% | | | |
| Standard Deviation | 18.39 | 190,918.83 | 190,918.83 | 113,513.97 |
| Coefficient of Dispersion | 12.77 | | | |
| Coefficient of Variation | 18.06 | | | |

Neighborhood: 1930

| | Assessment Ratio | SalesPrice | Adjusted Sale Price | Value |
|---------------------------|------------------|--------------|---------------------|--------------|
| Low Value | 96.08% | \$185,000.00 | \$185,000.00 | \$181,573.00 |
| High Value | 98.15% | \$265,000.00 | \$265,000.00 | \$254,600.00 |
| Median | 97.11% | \$225,000.00 | \$225,000.00 | \$218,086.50 |
| Mean | 97.11% | \$225,000.00 | \$225,000.00 | \$218,086.50 |
| Weighted Mean | 96.93% | | | |
| Standard Deviation | 1.47 | 56,568.54 | 56,568.54 | 51,637.89 |
| Coefficient of Dispersion | 1.07 | | | |
| Coefficient of Variation | 1.51 | | | |

Neighborhood: 1970

| | Assessment Ratio | SalesPrice | Adjusted Sale Price | Value |
|--|------------------|------------|---------------------|-------|
|--|------------------|------------|---------------------|-------|

Sales Ratio Report

As Of: 3/18/2026 Tax Year: 2026 Values - Final Sale Price - Actual

APPRAISAL

Neighborhood: 1970

| | Assessment Ratio | SalesPrice | Adjusted Sale Price | Value |
|---------------------------|------------------|--------------|---------------------|--------------|
| Low Value | 102.20% | \$273,000.00 | \$273,000.00 | \$278,993.00 |
| High Value | 106.68% | \$370,000.00 | \$370,000.00 | \$394,728.00 |
| Median | 104.44% | \$321,500.00 | \$321,500.00 | \$336,860.50 |
| Mean | 104.44% | \$321,500.00 | \$321,500.00 | \$336,860.50 |
| Weighted Mean | 104.78% | | | |
| Standard Deviation | 3.17 | 68,589.36 | 68,589.36 | 81,837.00 |
| Coefficient of Dispersion | 2.15 | | | |
| Coefficient of Variation | 3.04 | | | |

Neighborhood: 1972

| | Assessment Ratio | SalesPrice | Adjusted Sale Price | Value |
|---------------------------|------------------|--------------|---------------------|--------------|
| Low Value | 99.96% | \$140,000.00 | \$140,000.00 | \$139,944.00 |
| High Value | 101.95% | \$235,000.00 | \$235,000.00 | \$239,591.00 |
| Median | 100.96% | \$187,500.00 | \$187,500.00 | \$189,767.50 |
| Mean | 100.96% | \$187,500.00 | \$187,500.00 | \$189,767.50 |
| Weighted Mean | 101.21% | | | |
| Standard Deviation | 1.41 | 67,175.14 | 67,175.14 | 70,461.07 |
| Coefficient of Dispersion | 0.99 | | | |
| Coefficient of Variation | 1.40 | | | |

Neighborhood: 5000

| | Assessment Ratio | SalesPrice | Adjusted Sale Price | Value |
|--|------------------|------------|---------------------|-------|
|--|------------------|------------|---------------------|-------|

Sales Ratio Report

As Of: 3/18/2026 Tax Year: 2026 Values - Final Sale Price - Actual

APPRAISAL

Neighborhood: 5000

| | Assessment Ratio | SalesPrice | Adjusted Sale Price | Value |
|---------------------------|------------------|--------------|---------------------|--------------|
| Low Value | 90.43% | \$190,000.00 | \$190,000.00 | \$197,639.00 |
| High Value | 104.02% | \$312,000.00 | \$312,000.00 | \$312,863.00 |
| Median | 98.52% | \$301,000.00 | \$301,000.00 | \$282,088.00 |
| Mean | 97.87% | \$276,000.00 | \$276,000.00 | \$268,669.50 |
| Weighted Mean | 97.34% | | | |
| Standard Deviation | 5.78 | 58,263.77 | 58,263.77 | 52,107.84 |
| Coefficient of Dispersion | 4.34 | | | |
| Coefficient of Variation | 5.90 | | | |

Neighborhood: 5080

| | Assessment Ratio | SalesPrice | Adjusted Sale Price | Value |
|---------------------------|------------------|--------------|---------------------|--------------|
| Low Value | 91.34% | \$230,000.00 | \$230,000.00 | \$234,457.00 |
| High Value | 102.45% | \$352,000.00 | \$352,000.00 | \$345,784.00 |
| Median | 101.06% | \$295,000.00 | \$295,000.00 | \$269,459.00 |
| Mean | 98.79% | \$294,900.00 | \$294,900.00 | \$290,902.60 |
| Weighted Mean | 98.64% | | | |
| Standard Deviation | 4.65 | 51,247.44 | 51,247.44 | 50,162.64 |
| Coefficient of Dispersion | 3.14 | | | |
| Coefficient of Variation | 4.71 | | | |

Neighborhood: 5083

| | Assessment Ratio | SalesPrice | Adjusted Sale Price | Value |
|--|------------------|------------|---------------------|-------|
|--|------------------|------------|---------------------|-------|

Sales Ratio Report

As Of: 3/18/2026 Tax Year: 2026 Values - Final Sale Price - Actual

APPRAISAL

Neighborhood: 5083

| | Assessment Ratio | SalesPrice | Adjusted Sale Price | Value |
|---------------------------|------------------|--------------|---------------------|--------------|
| Low Value | 85.13% | \$284,990.00 | \$284,990.00 | \$302,447.00 |
| High Value | 115.03% | \$465,018.00 | \$465,018.00 | \$460,496.00 |
| Median | 99.90% | \$360,000.00 | \$360,000.00 | \$369,868.50 |
| Mean | 100.70% | \$370,412.66 | \$370,365.49 | \$371,576.10 |
| Weighted Mean | 100.31% | | | |
| Standard Deviation | 6.98 | 42,920.28 | 42,890.39 | 37,931.15 |
| Coefficient of Dispersion | 5.68 | | | |
| Coefficient of Variation | 6.93 | | | |

Neighborhood: 5120

| | Assessment Ratio | SalesPrice | Adjusted Sale Price | Value |
|---------------------------|------------------|--------------|---------------------|--------------|
| Low Value | 105.91% | \$280,000.00 | \$280,000.00 | \$303,729.00 |
| High Value | 108.47% | \$469,000.00 | \$469,000.00 | \$496,724.00 |
| Median | 107.19% | \$374,500.00 | \$374,500.00 | \$400,226.50 |
| Mean | 107.19% | \$374,500.00 | \$374,500.00 | \$400,226.50 |
| Weighted Mean | 106.87% | | | |
| Standard Deviation | 1.81 | 133,643.18 | 133,643.18 | 136,468.07 |
| Coefficient of Dispersion | 1.20 | | | |
| Coefficient of Variation | 1.69 | | | |

Neighborhood: 5136

| | Assessment Ratio | SalesPrice | Adjusted Sale Price | Value |
|--|------------------|------------|---------------------|-------|
|--|------------------|------------|---------------------|-------|

Sales Ratio Report

As Of: 3/18/2026 Tax Year: 2026 Values - Final Sale Price - Actual

APPRAISAL

Neighborhood: 5136

| | Assessment Ratio | SalesPrice | Adjusted Sale Price | Value |
|---------------------------|------------------|--------------|---------------------|--------------|
| Low Value | 98.40% | \$208,500.00 | \$208,500.00 | \$218,042.00 |
| High Value | 104.58% | \$224,900.00 | \$224,900.00 | \$221,298.00 |
| Median | 101.49% | \$216,700.00 | \$216,700.00 | \$219,670.00 |
| Mean | 101.49% | \$216,700.00 | \$216,700.00 | \$219,670.00 |
| Weighted Mean | 101.37% | | | |
| Standard Deviation | 4.37 | 11,596.55 | 11,596.55 | 2,302.34 |
| Coefficient of Dispersion | 3.04 | | | |
| Coefficient of Variation | 4.30 | | | |

Neighborhood: 5170

| | Assessment Ratio | SalesPrice | Adjusted Sale Price | Value |
|---------------------------|------------------|--------------|---------------------|--------------|
| Low Value | 93.46% | \$325,000.00 | \$325,000.00 | \$303,738.00 |
| High Value | 112.59% | \$560,000.00 | \$560,000.00 | \$625,073.00 |
| Median | 101.00% | \$358,500.00 | \$358,500.00 | \$383,732.50 |
| Mean | 103.04% | \$402,500.00 | \$402,500.00 | \$417,630.00 |
| Weighted Mean | 103.76% | | | |
| Standard Deviation | 7.56 | 94,958.41 | 94,958.41 | 118,272.41 |
| Coefficient of Dispersion | 5.55 | | | |
| Coefficient of Variation | 7.34 | | | |

Neighborhood: 5180

| | Assessment Ratio | SalesPrice | Adjusted Sale Price | Value |
|--|------------------|------------|---------------------|-------|
|--|------------------|------------|---------------------|-------|

Sales Ratio Report

As Of: 3/18/2026 Tax Year: 2026 Values - Final Sale Price - Actual

APPRAISAL

Neighborhood: 5180

| | Assessment Ratio | SalesPrice | Adjusted Sale Price | Value |
|---------------------------|------------------|--------------|---------------------|--------------|
| Low Value | 98.04% | \$299,900.00 | \$299,900.00 | \$309,812.00 |
| High Value | 109.75% | \$480,000.00 | \$480,000.00 | \$483,751.00 |
| Median | 99.76% | \$330,000.00 | \$330,000.00 | \$331,136.50 |
| Mean | 101.47% | \$349,566.67 | \$349,566.67 | \$354,175.83 |
| Weighted Mean | 101.32% | | | |
| Standard Deviation | 4.52 | 65,559.34 | 65,559.34 | 64,632.13 |
| Coefficient of Dispersion | 3.15 | | | |
| Coefficient of Variation | 4.45 | | | |

Neighborhood: 5240

| | Assessment Ratio | SalesPrice | Adjusted Sale Price | Value |
|---------------------------|------------------|--------------|---------------------|--------------|
| Low Value | 93.68% | \$390,000.00 | \$390,000.00 | \$402,780.00 |
| High Value | 103.28% | \$480,000.00 | \$480,000.00 | \$462,994.00 |
| Median | 96.46% | \$470,000.00 | \$470,000.00 | \$440,277.00 |
| Mean | 97.80% | \$446,666.67 | \$446,666.67 | \$435,350.33 |
| Weighted Mean | 97.47% | | | |
| Standard Deviation | 4.94 | 49,328.83 | 49,328.83 | 30,407.82 |
| Coefficient of Dispersion | 3.32 | | | |
| Coefficient of Variation | 5.05 | | | |

Neighborhood: 5290

| | Assessment Ratio | SalesPrice | Adjusted Sale Price | Value |
|--|------------------|------------|---------------------|-------|
|--|------------------|------------|---------------------|-------|

Sales Ratio Report

As Of: 3/18/2026 Tax Year: 2026 Values - Final Sale Price - Actual

APPRAISAL

| Neighborhood: 5290 | | | | | |
|---------------------------|------------------|--------------|---------------------|--------------|--|
| | Assessment Ratio | SalesPrice | Adjusted Sale Price | Value | |
| Low Value | 85.14% | \$235,000.00 | \$235,000.00 | \$200,077.00 | |
| High Value | 113.81% | \$568,000.00 | \$568,000.00 | \$531,287.00 | |
| Median | 99.14% | \$360,750.00 | \$360,750.00 | \$362,758.00 | |
| Mean | 100.12% | \$368,036.45 | \$368,036.45 | \$368,766.30 | |
| Weighted Mean | 100.20% | | | | |
| Standard Deviation | 7.48 | 71,153.19 | 71,153.19 | 75,129.14 | |
| Coefficient of Dispersion | 6.39 | | | | |
| Coefficient of Variation | 7.47 | | | | |

| Neighborhood: 5291 | | | | | |
|---------------------------|------------------|--------------|---------------------|--------------|--|
| | Assessment Ratio | SalesPrice | Adjusted Sale Price | Value | |
| Low Value | 85.26% | \$310,000.00 | \$310,000.00 | \$298,262.00 | |
| High Value | 107.90% | \$485,000.00 | \$485,000.00 | \$446,352.00 | |
| Median | 100.66% | \$370,000.00 | \$370,000.00 | \$373,161.00 | |
| Mean | 98.37% | \$376,047.92 | \$376,047.92 | \$368,738.44 | |
| Weighted Mean | 98.06% | | | | |
| Standard Deviation | 6.35 | 40,037.45 | 40,037.45 | 33,276.34 | |
| Coefficient of Dispersion | 5.01 | | | | |
| Coefficient of Variation | 6.46 | | | | |

| Neighborhood: 5310 | | | | | |
|--------------------|------------------|------------|---------------------|-------|--|
| | Assessment Ratio | SalesPrice | Adjusted Sale Price | Value | |

Sales Ratio Report

As Of: 3/18/2026 Tax Year: 2026 Values - Final Sale Price - Actual

APPRAISAL

Neighborhood: 5310

| | Assessment Ratio | SalesPrice | Adjusted Sale Price | Value |
|---------------------------|------------------|--------------|---------------------|--------------|
| Low Value | 87.49% | \$219,999.00 | \$219,999.00 | \$221,557.00 |
| High Value | 106.58% | \$335,000.00 | \$335,000.00 | \$351,711.00 |
| Median | 101.48% | \$273,600.00 | \$273,600.00 | \$253,535.00 |
| Mean | 99.37% | \$274,137.38 | \$274,137.38 | \$272,557.75 |
| Weighted Mean | 99.42% | | | |
| Standard Deviation | 6.90 | 42,288.14 | 42,288.14 | 48,365.63 |
| Coefficient of Dispersion | 5.20 | | | |
| Coefficient of Variation | 6.94 | | | |

Neighborhood: 5350

| | Assessment Ratio | SalesPrice | Adjusted Sale Price | Value |
|---------------------------|------------------|--------------|---------------------|--------------|
| Low Value | 100.09% | \$229,000.00 | \$229,000.00 | \$229,210.00 |
| High Value | 103.47% | \$245,000.00 | \$245,000.00 | \$252,477.00 |
| Median | 101.07% | \$244,000.00 | \$244,000.00 | \$247,624.00 |
| Mean | 101.55% | \$239,333.33 | \$239,333.33 | \$243,103.67 |
| Weighted Mean | 101.58% | | | |
| Standard Deviation | 1.74 | 8,962.89 | 8,962.89 | 12,274.50 |
| Coefficient of Dispersion | 1.12 | | | |
| Coefficient of Variation | 1.71 | | | |

Neighborhood: 5351

| | Assessment Ratio | SalesPrice | Adjusted Sale Price | Value |
|--|------------------|------------|---------------------|-------|
|--|------------------|------------|---------------------|-------|

Sales Ratio Report

As Of: 3/18/2026 Tax Year: 2026 Values - Final Sale Price - Actual

APPRAISAL

Neighborhood: 5351

| | Assessment Ratio | SalesPrice | Adjusted Sale Price | Value |
|---------------------------|------------------|--------------|---------------------|--------------|
| Low Value | 89.17% | \$228,000.00 | \$228,000.00 | \$225,840.00 |
| High Value | 113.52% | \$330,000.00 | \$330,000.00 | \$336,691.00 |
| Median | 101.86% | \$247,500.00 | \$247,500.00 | \$255,668.00 |
| Mean | 101.16% | \$255,739.09 | \$255,739.09 | \$258,114.43 |
| Weighted Mean | 100.93% | | | |
| Standard Deviation | 5.72 | 27,005.41 | 27,005.41 | 24,570.36 |
| Coefficient of Dispersion | 4.16 | | | |
| Coefficient of Variation | 5.66 | | | |

Neighborhood: 5380

| | Assessment Ratio | SalesPrice | Adjusted Sale Price | Value |
|---------------------------|------------------|--------------|---------------------|--------------|
| Low Value | 87.91% | \$250,000.00 | \$250,000.00 | \$241,964.00 |
| High Value | 114.87% | \$372,050.00 | \$372,050.00 | \$405,109.00 |
| Median | 101.01% | \$295,000.00 | \$295,000.00 | \$306,282.00 |
| Mean | 102.13% | \$299,883.79 | \$299,883.79 | \$306,038.89 |
| Weighted Mean | 102.05% | | | |
| Standard Deviation | 6.19 | 33,806.20 | 33,806.20 | 37,247.74 |
| Coefficient of Dispersion | 4.96 | | | |
| Coefficient of Variation | 6.06 | | | |

Neighborhood: 5410

| | Assessment Ratio | SalesPrice | Adjusted Sale Price | Value |
|--|------------------|------------|---------------------|-------|
|--|------------------|------------|---------------------|-------|

Sales Ratio Report

As Of: 3/18/2026 Tax Year: 2026 Values - Final Sale Price - Actual

APPRAISAL

Neighborhood: 5410

| | Assessment Ratio | SalesPrice | Adjusted Sale Price | Value |
|---------------------------|------------------|--------------|---------------------|--------------|
| Low Value | 86.93% | \$295,000.00 | \$295,000.00 | \$256,437.00 |
| High Value | 105.49% | \$365,000.00 | \$365,000.00 | \$382,665.00 |
| Median | 101.46% | \$320,000.00 | \$320,000.00 | \$327,905.50 |
| Mean | 99.65% | \$327,875.00 | \$327,875.00 | \$327,687.50 |
| Weighted Mean | 99.94% | | | |
| Standard Deviation | 6.15 | 24,150.94 | 24,150.94 | 40,814.75 |
| Coefficient of Dispersion | 4.26 | | | |
| Coefficient of Variation | 6.17 | | | |

Neighborhood: 5413

| | Assessment Ratio | SalesPrice | Adjusted Sale Price | Value |
|---------------------------|------------------|--------------|---------------------|--------------|
| Low Value | 90.06% | \$280,950.00 | \$280,950.00 | \$276,794.00 |
| High Value | 111.96% | \$442,000.00 | \$442,000.00 | \$426,024.00 |
| Median | 101.01% | \$365,995.00 | \$365,995.00 | \$375,351.00 |
| Mean | 101.33% | \$365,308.25 | \$365,282.04 | \$369,852.30 |
| Weighted Mean | 101.24% | | | |
| Standard Deviation | 4.43 | 29,051.64 | 29,069.39 | 29,155.73 |
| Coefficient of Dispersion | 3.65 | | | |
| Coefficient of Variation | 4.37 | | | |

Neighborhood: 5415

| | Assessment Ratio | SalesPrice | Adjusted Sale Price | Value |
|--|------------------|------------|---------------------|-------|
|--|------------------|------------|---------------------|-------|

Sales Ratio Report

As Of: 3/18/2026 Tax Year: 2026 Values - Final Sale Price - Actual

APPRAISAL

Neighborhood: 5415

| | Assessment Ratio | SalesPrice | Adjusted Sale Price | Value |
|---------------------------|------------------|--------------|---------------------|--------------|
| Low Value | 96.32% | \$265,000.00 | \$265,000.00 | \$288,065.00 |
| High Value | 112.49% | \$395,320.00 | \$395,320.00 | \$400,121.00 |
| Median | 101.49% | \$365,000.00 | \$365,000.00 | \$389,127.00 |
| Mean | 103.44% | \$352,035.00 | \$352,035.00 | \$362,915.36 |
| Weighted Mean | 103.09% | | | |
| Standard Deviation | 5.22 | 47,990.93 | 47,990.93 | 43,192.52 |
| Coefficient of Dispersion | 4.15 | | | |
| Coefficient of Variation | 5.04 | | | |

Neighborhood: 5420

| | Assessment Ratio | SalesPrice | Adjusted Sale Price | Value |
|---------------------------|------------------|--------------|---------------------|--------------|
| Low Value | 92.66% | \$260,000.00 | \$260,000.00 | \$282,033.00 |
| High Value | 113.43% | \$542,600.00 | \$542,600.00 | \$558,559.00 |
| Median | 101.41% | \$345,000.00 | \$345,000.00 | \$359,891.00 |
| Mean | 101.80% | \$351,722.31 | \$351,722.31 | \$356,753.35 |
| Weighted Mean | 101.43% | | | |
| Standard Deviation | 5.25 | 59,191.49 | 59,191.49 | 54,645.72 |
| Coefficient of Dispersion | 3.93 | | | |
| Coefficient of Variation | 5.16 | | | |

Neighborhood: 5430

| | Assessment Ratio | SalesPrice | Adjusted Sale Price | Value |
|--|------------------|------------|---------------------|-------|
|--|------------------|------------|---------------------|-------|

Sales Ratio Report

As Of: 3/18/2026 Tax Year: 2026 Values - Final Sale Price - Actual

APPRAISAL

| Neighborhood: 5430 | | | | | |
|---------------------------|------------------|--------------|---------------------|--------------|--|
| | Assessment Ratio | SalesPrice | Adjusted Sale Price | Value | |
| Low Value | 95.98% | \$360,000.00 | \$360,000.00 | \$359,937.00 | |
| High Value | 115.20% | \$406,000.00 | \$406,000.00 | \$414,736.00 | |
| Median | 96.42% | \$375,000.00 | \$375,000.00 | \$391,451.00 | |
| Mean | 102.53% | \$380,333.33 | \$380,333.33 | \$388,708.00 | |
| Weighted Mean | 102.20% | | | | |
| Standard Deviation | 10.97 | 23,459.18 | 23,459.18 | 27,502.28 | |
| Coefficient of Dispersion | 6.65 | | | | |
| Coefficient of Variation | 10.70 | | | | |

| Neighborhood: 5449 | | | | | |
|---------------------------|------------------|--------------|---------------------|--------------|--|
| | Assessment Ratio | SalesPrice | Adjusted Sale Price | Value | |
| Low Value | 86.80% | \$268,000.00 | \$268,000.00 | \$270,827.00 | |
| High Value | 114.96% | \$465,000.00 | \$465,000.00 | \$500,131.00 | |
| Median | 101.36% | \$349,500.00 | \$349,500.00 | \$366,760.00 | |
| Mean | 101.74% | \$360,141.43 | \$360,141.43 | \$367,566.31 | |
| Weighted Mean | 102.06% | | | | |
| Standard Deviation | 8.20 | 55,205.77 | 55,205.77 | 69,848.17 | |
| Coefficient of Dispersion | 6.74 | | | | |
| Coefficient of Variation | 8.06 | | | | |

| Neighborhood: 5462 | | | | | |
|--------------------|------------------|------------|---------------------|-------|--|
| | Assessment Ratio | SalesPrice | Adjusted Sale Price | Value | |

Sales Ratio Report

As Of: 3/18/2026 Tax Year: 2026 Values - Final Sale Price - Actual

APPRAISAL

Neighborhood: 5462

| | Assessment Ratio | SalesPrice | Adjusted Sale Price | Value |
|---------------------------|------------------|--------------|---------------------|--------------|
| Low Value | 92.66% | \$190,000.00 | \$190,000.00 | \$194,577.00 |
| High Value | 106.22% | \$210,000.00 | \$210,000.00 | \$207,975.00 |
| Median | 99.02% | \$205,000.00 | \$205,000.00 | \$199,914.50 |
| Mean | 99.23% | \$202,500.00 | \$202,500.00 | \$200,595.25 |
| Weighted Mean | 99.06% | | | |
| Standard Deviation | 5.54 | 9,574.27 | 9,574.27 | 5,740.31 |
| Coefficient of Dispersion | 3.43 | | | |
| Coefficient of Variation | 5.59 | | | |

Neighborhood: 5463

| | Assessment Ratio | SalesPrice | Adjusted Sale Price | Value |
|---------------------------|------------------|--------------|---------------------|--------------|
| Low Value | 90.31% | \$235,000.00 | \$235,000.00 | \$232,645.00 |
| High Value | 107.76% | \$365,000.00 | \$365,000.00 | \$329,616.00 |
| Median | 101.09% | \$300,000.00 | \$300,000.00 | \$310,133.00 |
| Mean | 100.87% | \$286,416.67 | \$286,416.67 | \$288,574.22 |
| Weighted Mean | 100.75% | | | |
| Standard Deviation | 6.30 | 42,405.78 | 42,405.78 | 42,535.34 |
| Coefficient of Dispersion | 5.10 | | | |
| Coefficient of Variation | 6.25 | | | |

Neighborhood: 5490

| | Assessment Ratio | SalesPrice | Adjusted Sale Price | Value |
|--|------------------|------------|---------------------|-------|
|--|------------------|------------|---------------------|-------|

Sales Ratio Report

As Of: 3/18/2026 Tax Year: 2026 Values - Final Sale Price - Actual

APPRAISAL

| Neighborhood: 5490 | | | | |
|---------------------------|------------------|--------------|---------------------|--------------|
| | Assessment Ratio | SalesPrice | Adjusted Sale Price | Value |
| Low Value | 97.20% | \$260,000.00 | \$260,000.00 | \$261,879.00 |
| High Value | 106.88% | \$352,000.00 | \$352,000.00 | \$342,127.00 |
| Median | 100.72% | \$290,000.00 | \$290,000.00 | \$309,945.00 |
| Mean | 101.62% | \$298,400.00 | \$298,400.00 | \$302,824.60 |
| Weighted Mean | 101.48% | | | |
| Standard Deviation | 4.54 | 33,508.21 | 33,508.21 | 31,178.56 |
| Coefficient of Dispersion | 3.57 | | | |
| Coefficient of Variation | 4.47 | | | |

| Neighborhood: 5510 | | | | |
|---------------------------|------------------|----------------|---------------------|----------------|
| | Assessment Ratio | SalesPrice | Adjusted Sale Price | Value |
| Low Value | 89.77% | \$580,000.00 | \$580,000.00 | \$612,468.00 |
| High Value | 105.88% | \$1,150,000.00 | \$1,150,000.00 | \$1,186,270.00 |
| Median | 101.09% | \$770,000.00 | \$770,000.00 | \$785,536.00 |
| Mean | 98.25% | \$807,222.22 | \$807,222.22 | \$790,856.22 |
| Weighted Mean | 97.97% | | | |
| Standard Deviation | 6.00 | 176,482.31 | 176,482.31 | 175,337.82 |
| Coefficient of Dispersion | 4.74 | | | |
| Coefficient of Variation | 6.11 | | | |

| Neighborhood: 5511 | | | | |
|--------------------|------------------|------------|---------------------|-------|
| | Assessment Ratio | SalesPrice | Adjusted Sale Price | Value |

Sales Ratio Report

As Of: 3/18/2026 Tax Year: 2026 Values - Final Sale Price - Actual

APPRAISAL

| Neighborhood: 5511 | | | | |
|---------------------------|------------------|----------------|---------------------|----------------|
| | Assessment Ratio | SalesPrice | Adjusted Sale Price | Value |
| Low Value | 90.12% | \$762,000.00 | \$762,000.00 | \$832,639.00 |
| High Value | 109.27% | \$1,410,000.00 | \$1,410,000.00 | \$1,334,123.00 |
| Median | 97.41% | \$923,250.00 | \$923,250.00 | \$878,497.00 |
| Mean | 98.55% | \$1,004,625.00 | \$1,004,625.00 | \$980,939.00 |
| Weighted Mean | 97.64% | | | |
| Standard Deviation | 8.25 | 280,740.50 | 280,740.50 | 239,271.02 |
| Coefficient of Dispersion | 6.35 | | | |
| Coefficient of Variation | 8.37 | | | |

| Neighborhood: 5581 | | | | |
|---------------------------|------------------|--------------|---------------------|--------------|
| | Assessment Ratio | SalesPrice | Adjusted Sale Price | Value |
| Low Value | 87.01% | \$189,999.00 | \$189,999.00 | \$165,324.00 |
| High Value | 115.11% | \$293,000.00 | \$293,000.00 | \$336,636.00 |
| Median | 100.91% | \$235,000.00 | \$235,000.00 | \$236,809.50 |
| Mean | 101.97% | \$235,085.26 | \$235,085.26 | \$240,445.56 |
| Weighted Mean | 102.28% | | | |
| Standard Deviation | 7.27 | 20,620.93 | 20,620.93 | 33,708.36 |
| Coefficient of Dispersion | 5.86 | | | |
| Coefficient of Variation | 7.13 | | | |

| Neighborhood: 5582 | | | | |
|--------------------|------------------|------------|---------------------|-------|
| | Assessment Ratio | SalesPrice | Adjusted Sale Price | Value |

Sales Ratio Report

As Of: 3/18/2026 Tax Year: 2026 Values - Final Sale Price - Actual

APPRAISAL

Neighborhood: 5582

| | Assessment Ratio | SalesPrice | Adjusted Sale Price | Value |
|---------------------------|------------------|--------------|---------------------|--------------|
| Low Value | 95.67% | \$226,000.00 | \$226,000.00 | \$234,229.00 |
| High Value | 110.87% | \$300,000.00 | \$300,000.00 | \$302,818.00 |
| Median | 100.85% | \$251,000.00 | \$251,000.00 | \$255,243.50 |
| Mean | 101.65% | \$256,618.75 | \$256,618.75 | \$260,905.00 |
| Weighted Mean | 101.67% | | | |
| Standard Deviation | 4.23 | 20,942.91 | 20,942.91 | 24,431.93 |
| Coefficient of Dispersion | 3.32 | | | |
| Coefficient of Variation | 4.16 | | | |

Neighborhood: 5610

| | Assessment Ratio | SalesPrice | Adjusted Sale Price | Value |
|---------------------------|------------------|--------------|---------------------|--------------|
| Low Value | 112.25% | \$219,900.00 | \$219,900.00 | \$253,528.00 |
| High Value | 115.29% | \$320,000.00 | \$320,000.00 | \$359,193.00 |
| Median | 113.77% | \$269,950.00 | \$269,950.00 | \$306,360.50 |
| Mean | 113.77% | \$269,950.00 | \$269,950.00 | \$306,360.50 |
| Weighted Mean | 113.49% | | | |
| Standard Deviation | 2.15 | 70,781.39 | 70,781.39 | 74,716.44 |
| Coefficient of Dispersion | 1.34 | | | |
| Coefficient of Variation | 1.89 | | | |

Neighborhood: 5630

| | Assessment Ratio | SalesPrice | Adjusted Sale Price | Value |
|--|------------------|------------|---------------------|-------|
|--|------------------|------------|---------------------|-------|

Sales Ratio Report

As Of: 3/18/2026 Tax Year: 2026 Values - Final Sale Price - Actual

APPRAISAL

Neighborhood: 5630

| | Assessment Ratio | SalesPrice | Adjusted Sale Price | Value |
|---------------------------|------------------|--------------|---------------------|--------------|
| Low Value | 91.93% | \$225,000.00 | \$225,000.00 | \$237,138.00 |
| High Value | 112.60% | \$300,000.00 | \$300,000.00 | \$320,905.00 |
| Median | 98.89% | \$271,250.00 | \$271,250.00 | \$266,234.50 |
| Mean | 99.12% | \$268,608.33 | \$268,608.33 | \$265,817.22 |
| Weighted Mean | 98.96% | | | |
| Standard Deviation | 5.26 | 22,772.15 | 22,772.15 | 22,014.49 |
| Coefficient of Dispersion | 3.75 | | | |
| Coefficient of Variation | 5.31 | | | |

Neighborhood: 5631

| | Assessment Ratio | SalesPrice | Adjusted Sale Price | Value |
|---------------------------|------------------|--------------|---------------------|--------------|
| Low Value | 89.62% | \$355,000.00 | \$355,000.00 | \$335,558.00 |
| High Value | 111.98% | \$575,000.00 | \$575,000.00 | \$519,436.00 |
| Median | 101.64% | \$394,775.00 | \$394,775.00 | \$412,577.00 |
| Mean | 99.74% | \$414,413.05 | \$414,413.05 | \$411,636.55 |
| Weighted Mean | 99.33% | | | |
| Standard Deviation | 6.60 | 55,104.86 | 55,104.86 | 44,707.07 |
| Coefficient of Dispersion | 5.42 | | | |
| Coefficient of Variation | 6.61 | | | |

Neighborhood: 5662

| | Assessment Ratio | SalesPrice | Adjusted Sale Price | Value |
|--|------------------|------------|---------------------|-------|
|--|------------------|------------|---------------------|-------|

Sales Ratio Report

As Of: 3/18/2026 Tax Year: 2026 Values - Final Sale Price - Actual

APPRAISAL

| Neighborhood: 5662 | | | | | |
|---------------------------|------------------|--------------|---------------------|--------------|--|
| | Assessment Ratio | SalesPrice | Adjusted Sale Price | Value | |
| Low Value | 88.48% | \$160,000.00 | \$160,000.00 | \$181,572.00 | |
| High Value | 113.48% | \$274,000.00 | \$274,000.00 | \$295,561.00 | |
| Median | 101.07% | \$234,000.00 | \$234,000.00 | \$239,203.00 | |
| Mean | 102.39% | \$231,316.86 | \$231,316.86 | \$236,421.29 | |
| Weighted Mean | 102.21% | | | | |
| Standard Deviation | 6.13 | 23,111.19 | 23,111.19 | 24,209.82 | |
| Coefficient of Dispersion | 4.90 | | | | |
| Coefficient of Variation | 5.98 | | | | |

| Neighborhood: 5664 | | | | | |
|---------------------------|------------------|--------------|---------------------|--------------|--|
| | Assessment Ratio | SalesPrice | Adjusted Sale Price | Value | |
| Low Value | 91.40% | \$225,000.00 | \$225,000.00 | \$228,608.00 | |
| High Value | 106.77% | \$337,000.00 | \$337,000.00 | \$355,361.00 | |
| Median | 100.93% | \$295,000.00 | \$295,000.00 | \$293,916.00 | |
| Mean | 100.16% | \$289,450.00 | \$289,450.00 | \$290,017.86 | |
| Weighted Mean | 100.20% | | | | |
| Standard Deviation | 4.60 | 29,294.31 | 29,294.31 | 33,623.01 | |
| Coefficient of Dispersion | 3.56 | | | | |
| Coefficient of Variation | 4.59 | | | | |

| Neighborhood: 5720 | | | | | |
|--------------------|------------------|------------|---------------------|-------|--|
| | Assessment Ratio | SalesPrice | Adjusted Sale Price | Value | |

Sales Ratio Report

As Of: 3/18/2026 Tax Year: 2026 Values - Final Sale Price - Actual

APPRAISAL

Neighborhood: 5720

| | Assessment Ratio | SalesPrice | Adjusted Sale Price | Value |
|---------------------------|------------------|--------------|---------------------|--------------|
| Low Value | 85.22% | \$200,000.00 | \$200,000.00 | \$225,868.00 |
| High Value | 114.92% | \$379,990.00 | \$379,990.00 | \$370,829.00 |
| Median | 100.46% | \$273,845.00 | \$273,845.00 | \$277,156.50 |
| Mean | 100.83% | \$277,530.43 | \$277,481.27 | \$279,255.53 |
| Weighted Mean | 100.62% | | | |
| Standard Deviation | 5.59 | 32,888.58 | 32,896.19 | 31,792.68 |
| Coefficient of Dispersion | 4.41 | | | |
| Coefficient of Variation | 5.55 | | | |

Neighborhood: 5740

| | Assessment Ratio | SalesPrice | Adjusted Sale Price | Value |
|---------------------------|------------------|--------------|---------------------|--------------|
| Low Value | 87.68% | \$175,000.00 | \$175,000.00 | \$153,443.00 |
| High Value | 110.07% | \$360,000.00 | \$360,000.00 | \$378,668.00 |
| Median | 105.03% | \$247,500.00 | \$247,500.00 | \$249,207.00 |
| Mean | 101.05% | \$254,000.00 | \$254,000.00 | \$259,481.50 |
| Weighted Mean | 102.16% | | | |
| Standard Deviation | 9.33 | 64,358.37 | 64,358.37 | 79,591.04 |
| Coefficient of Dispersion | 6.22 | | | |
| Coefficient of Variation | 9.23 | | | |

Neighborhood: 5745

| | Assessment Ratio | SalesPrice | Adjusted Sale Price | Value |
|--|------------------|------------|---------------------|-------|
|--|------------------|------------|---------------------|-------|

Sales Ratio Report

As Of: 3/18/2026 Tax Year: 2026 Values - Final Sale Price - Actual

APPRAISAL

Neighborhood: 5745

| | Assessment Ratio | SalesPrice | Adjusted Sale Price | Value |
|---------------------------|------------------|--------------|---------------------|--------------|
| Low Value | 87.37% | \$294,990.00 | \$294,990.00 | \$296,769.00 |
| High Value | 115.33% | \$528,000.00 | \$528,000.00 | \$531,830.00 |
| Median | 101.47% | \$384,310.00 | \$384,310.00 | \$389,369.50 |
| Mean | 101.68% | \$394,310.45 | \$394,234.36 | \$399,170.41 |
| Weighted Mean | 101.23% | | | |
| Standard Deviation | 5.84 | 63,715.85 | 63,625.55 | 57,347.10 |
| Coefficient of Dispersion | 4.64 | | | |
| Coefficient of Variation | 5.75 | | | |

Neighborhood: 5760

| | Assessment Ratio | SalesPrice | Adjusted Sale Price | Value |
|---------------------------|------------------|--------------|---------------------|--------------|
| Low Value | 102.64% | \$245,000.00 | \$245,000.00 | \$256,612.00 |
| High Value | 106.54% | \$250,000.00 | \$250,000.00 | \$261,034.00 |
| Median | 104.59% | \$247,500.00 | \$247,500.00 | \$258,823.00 |
| Mean | 104.59% | \$247,500.00 | \$247,500.00 | \$258,823.00 |
| Weighted Mean | 104.57% | | | |
| Standard Deviation | 2.76 | 3,535.53 | 3,535.53 | 3,126.83 |
| Coefficient of Dispersion | 1.86 | | | |
| Coefficient of Variation | 2.64 | | | |

Neighborhood: 5810

| | Assessment Ratio | SalesPrice | Adjusted Sale Price | Value |
|--|------------------|------------|---------------------|-------|
|--|------------------|------------|---------------------|-------|

Sales Ratio Report

As Of: 3/18/2026 Tax Year: 2026 Values - Final Sale Price - Actual

APPRAISAL

Neighborhood: 5810

| | Assessment Ratio | SalesPrice | Adjusted Sale Price | Value |
|---------------------------|------------------|--------------|---------------------|--------------|
| Low Value | 99.07% | \$279,000.00 | \$279,000.00 | \$276,413.00 |
| High Value | 103.65% | \$395,000.00 | \$395,000.00 | \$409,409.00 |
| Median | 101.04% | \$283,000.00 | \$283,000.00 | \$285,933.00 |
| Mean | 101.25% | \$319,000.00 | \$319,000.00 | \$323,918.33 |
| Weighted Mean | 101.54% | | | |
| Standard Deviation | 2.30 | 65,848.31 | 65,848.31 | 74,189.95 |
| Coefficient of Dispersion | 1.51 | | | |
| Coefficient of Variation | 2.27 | | | |

Report Totals

| | Assessment Ratio | SalesPrice | Adjusted Sale Price | Value |
|---------------------------|------------------|----------------|---------------------|----------------|
| Low Value | 85.11% | \$73,000.00 | \$73,000.00 | \$80,297.00 |
| High Value | 116.00% | \$3,550,000.00 | \$3,550,000.00 | \$3,343,647.00 |
| Median | 101.05% | \$355,000.00 | \$355,000.00 | \$360,912.00 |
| Mean | 101.11% | \$382,258.52 | \$382,237.60 | \$385,490.55 |
| Weighted Mean | 100.85% | | | |
| Standard Deviation | 6.02 | 155,128.30 | 155,130.71 | 153,145.73 |
| Coefficient of Dispersion | 4.73 | | | |
| Coefficient of Variation | 5.96 | | | |

Sales Ratio Report

As Of: 3/18/2026

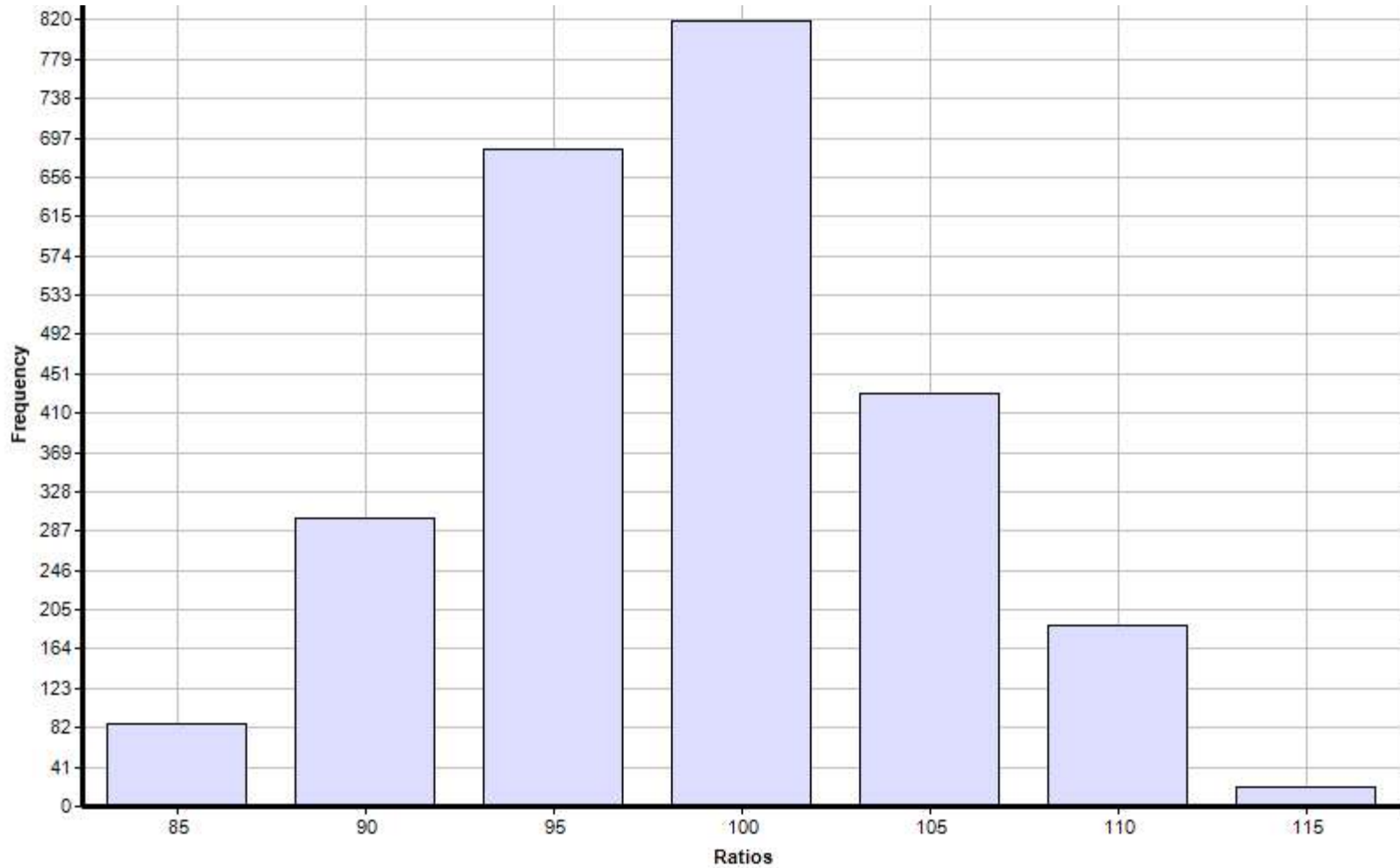
Tax Year: 2026

Values - Final

Sale Price - Actual

APPRAISAL

Histogram of Sales Ratios for Report Totals
Number of Sales = 2529 Mean = 101.11 Median = 101.05



Sales Ratio Report

As Of: 3/18/2026

Tax Year: 2026

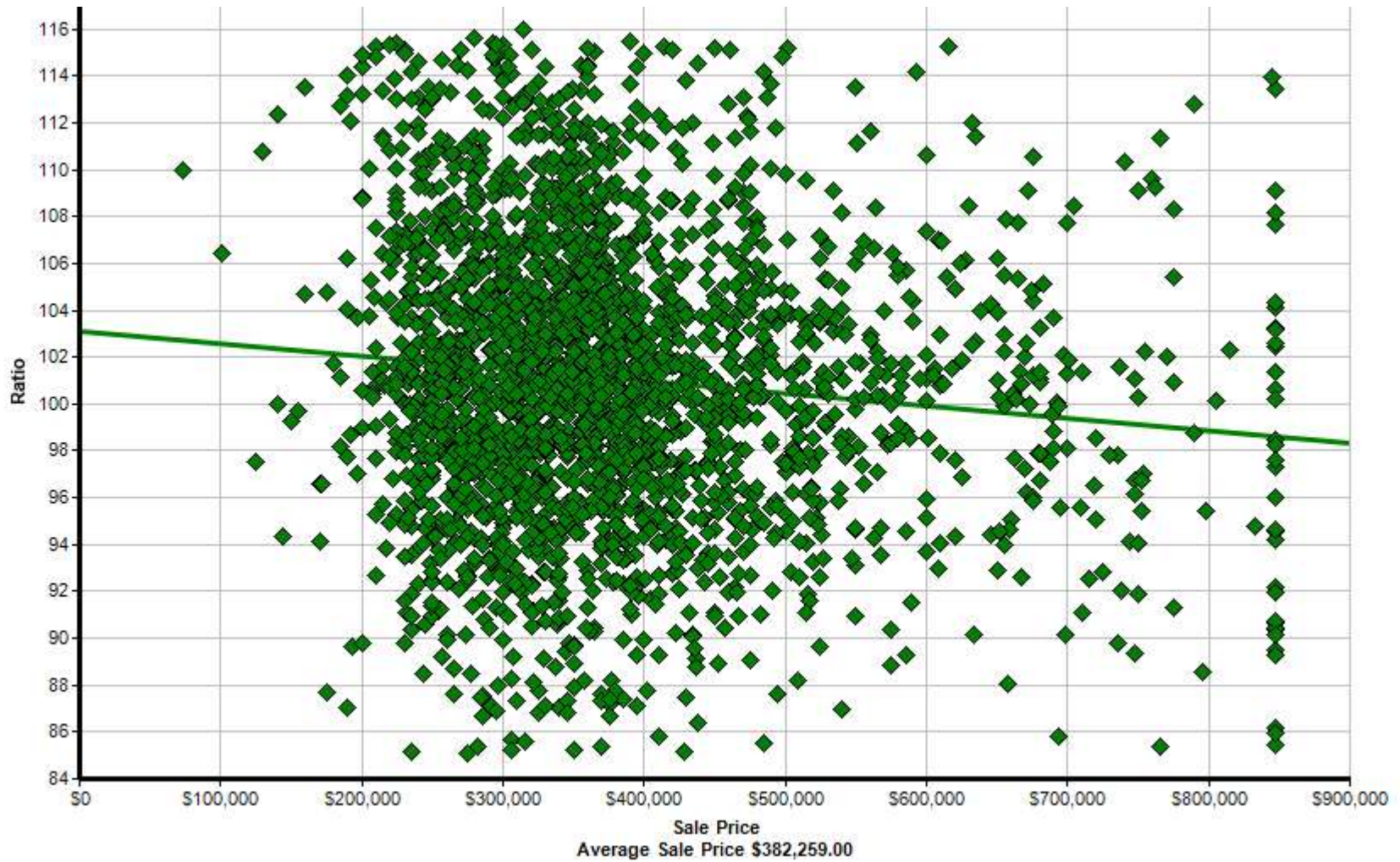
Values - Final

Sale Price - Actual

APPRAISAL

Sales Ratio by Price with Trendline for Report Totals

PRD = 100.259



Sales Ratio Report

As Of: 3/18/2026

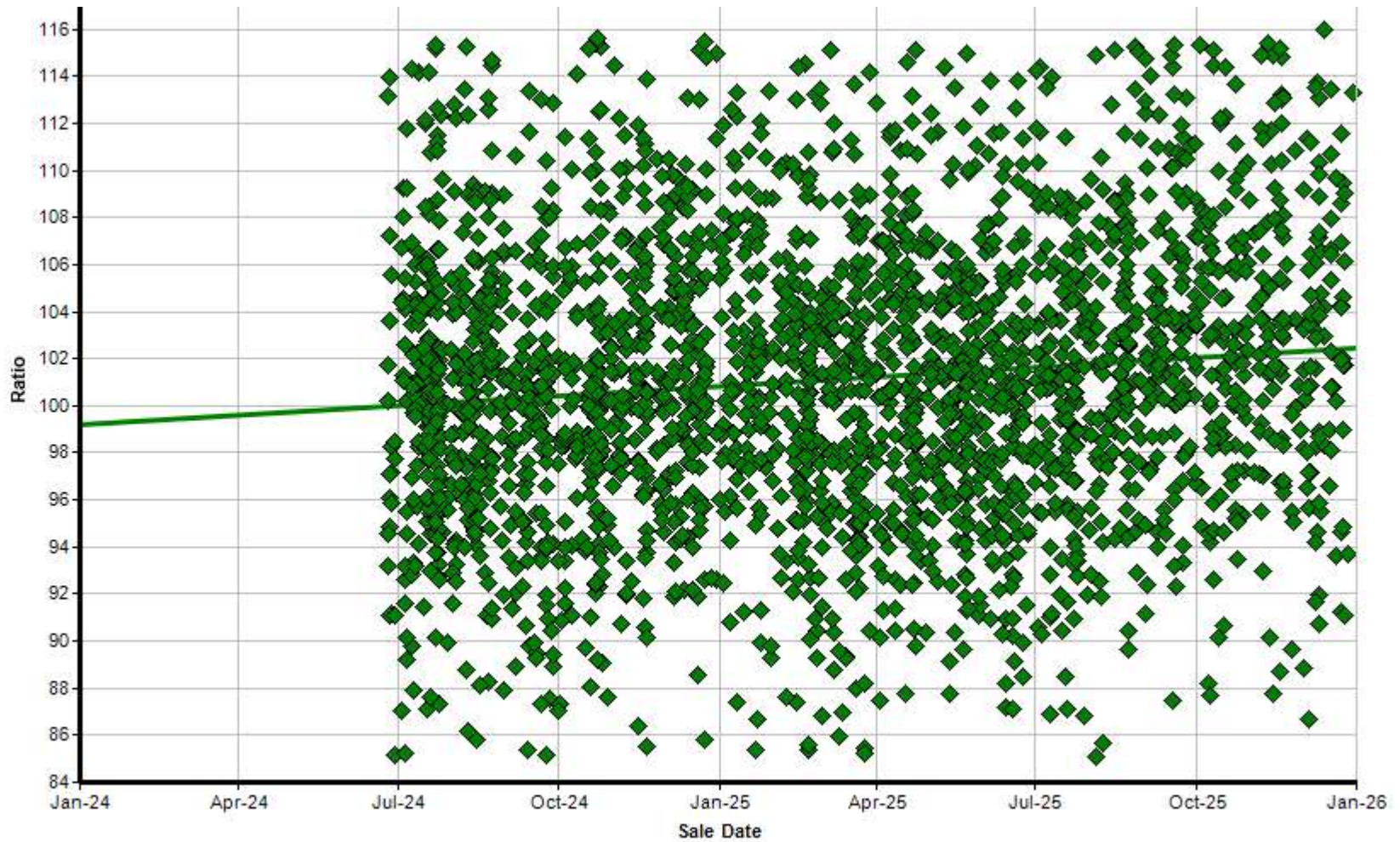
Tax Year: 2026

Values - Final

Sale Price - Actual

APPRAISAL

Sales Ratio by Date with Trendline for Report Totals



Sales Ratio Report

FT. BEND CENTRAL APPRAISAL DISTRICT

As Of: 3/18/2026

Tax Year: 2026

Values - Final

Sale Price - Actual

APPRAISAL

Sales Ratio Report

As Of: 3/18/2026 Tax Year: 2026 Values - Final Sale Price - Actual

APPRAISAL

Report Set-up

Tax Year: 2026
Property Type: Real Developer/Builder,Real,Real Residential,Real Land
Sale Date Range: 07/01/2024 to 06/30/2026
Validity Codes Included: Valid Transfer,Valid Transfer and Verified Sale Price,VT VSP,Valid Transfer Change After Sale,Valid Transfer Bad Sale Price
Outliers Identified by: No Outlier Trimming
Value: Final
Sale Price: Actual , untrended
Market Area : Residential Lamar - South

Sort/Group: Level 1 Neighborhood (group)
Neighborhood Group

Reporting Thresholds: 1
Statistics: Standard

Run Totals

Sales Considered: 2529

Sales Used 2529

By Validity Code VTVSP: 2529

By Sale Type
RSLN: 67
RSLR: 15
VRN: 1239
VRR: 1208